



CIP™ 5
2-way PoE++
Audio over IP
Powered Loudspeaker

Operating
Manual

Model Number or Name:
Date of Purchase:
Serial Number:
Dealer Name:
MAC Address:
IP Address:

Crest Audio® CIP™ 5

The Crest Audio CIP 5 features a 5.25 inch high performance woofer and a 0.78 inch dynamic tweeter, combining high efficiency with versatile installation options, making it ideal for a wide range of audio applications.

With exceptional sound quality and a rich tonal palette, the CIP 5 effortlessly adapts to various music genres. Whether it is cinematic depth of movie soundtracks, the rhythmic intensity of hip-hop, the electrifying energy of hard rock, or the sophisticated elegance of contemporary jazz and modern pop, it delivers every nuance with clarity and precision.

Designed with Dante® audio networking technology, the CIP 5 features a RJ45 connector that supports seamless integration into Dante-enabled systems, as well as AES67 environments, ensuring stable, low-latency, and highly efficient digital audio transmission. Additionally, the CIP 5 is equipped with Power over Ethernet (PoE++) functionality, allowing both power and audio signals to be delivered via a single Ethernet cable, simplifying installation and reducing cable clutter.

These advanced features make the CIP 5 an outstanding choice for professional networked audio environments, providing exceptional performance and installation flexibility.

Features

- Compact two-way PoE++ powered loudspeaker
- Audio over IP: Dante® (AES67 compliant)
- Premium 5.25" woofer, 1" voice coil
- 0.78" Ferrofluid cooled dynamic tweeter, 0.78" voice coil
- Continuous power handling: 30 Watts
- Nominal impedance: 8 Ohms
- Coverage pattern (HxV): 90° x 60°
- Supports Power over Ethernet (PoE++ IEEE 802.3bt Type 3)
- Input Connectors: 1 x RJ45
- UL94V0 Flame-rated injection-molded plastic enclosure
- U-Bracket included
- Available in Black

Configuration: 2-way PoE++ powered speaker

Power Handling*: 30 Watts Continuous, 60 Watts Peak

Nominal Impedance: 8 Ohms

Sensitivity (1W/1m): 85 dB

Maximum SPL (1m): 101 dB

Frequency Response (± 3 dB): 65 Hz - 20 kHz (wall mounted) 81 Hz - 20 kHz (free space)

Frequency Range (-10 dB): 55 Hz - 20 kHz (wall mounted) / 63 Hz - 20 kHz (free space)

Nominal Coverage Pattern: 90° H x 60° V

LF Driver: 1 x 5.25" (133 mm) High performance woofer with special coated paper cone

LF Driver Voice Coil: 1" (25 mm)

HF Driver: 1 x 0.78" (20 mm) Ferrofluid cooled dynamic tweeter with PEI diaphragm

HF Driver Voice Coil: 0.78" (20 mm)

Input Connections: 1 x RJ45

Power Source: PoE++ IEEE 802.3bt Type 3

External Power Supply: DC In - 24 V, 2.7 A (optional)

Audio over IP: Dante® (AES67 compliant)

Cat Cable Specification: Cat6a recommended

Amplifier Topology: Class D, bi-amped

Internal DSP: Yes

Enclosure Material: Injection-molded plastic with a UL94V0 flame rating

Finish: Matte Black spray paint

Black Finish: RAL 9004 Signal Black (Pantone: Black 6)

Front: Full-coverage perforated aluminum grille, liquid coating

Mounting Provisions: Two (2) M6 suspension points, top and bottom for the included U-Bracket

Overall Dimensions (HWD):

w/o U-Bracket - 9.65" x 7.28" x 6.50" (245 x 185 x 165 mm)

with U-Bracket - 9.96" x 7.28" x 7.44" (253 x 185 x 189 mm)

Net Weight: 5.7 lbs (2.6 kg)



This Crest Audio loudspeaker should be mounted only in accordance with the procedures and limitations specified in the user's manual and possible manual update notices. This speaker and U-Bracket assembly should be mounted with certified rigging hardware by an authorized rigging professional and in compliance with local, provincial or national suspension or mounting ordinances.

Before attempting to suspend this speaker, consult with a certified structural engineer. Speaker can fall from improper suspension, resulting in serious injury and property damage. Do not suspend or mount any other product or device from this enclosure! Use only the correct mating hardware. All associated rigging is the responsibility of others.

The mounting hardware for affixing the U-Bracket to a wall or ceiling, is not supplied, and good industry practice and safety precautions should be used to assure a solid and safe mounting situation for the U-Bracket. Never transport the cabinet using the U-Bracket as a structural member or handle, while the cabinet is unsupported otherwise, as this may unduly stress the mounting inserts.

INSTALLATION

A total of two (2) M6 threaded mounting suspension points (1 top, and 1 bottom) are provided.

The top and bottom mounting suspension points are for use with the included U-Bracket.

 **DO NOT SUSPEND OR MOUNT ANY OTHER PRODUCT OR DEVICE FROM THIS ENCLOSURE!**

CAUTION

This product is not rated for outdoor use!

Do not expose this product to any type of moisture. Exposure to direct sunlight may cause the finish to fade or alter shades.

WARNING

The CIP 5 PoE++ powered 2-way loudspeaker system is very efficient and powerful! This sound system can permanently damage hearing! Use extreme care setting the overall maximum loudness!

The apparent sound level of the CIP 5 can be deceiving due to its clear, clean sound output. The lack of distortion or obvious distress can make the sound level seem much lower than it actually is. This system is capable of sound pressure levels (SPL) in excess of 101 dB at 1 meter from the speaker!

Installation instructions for included U-Bracket



Image #1



Image #2

1. U-Bracket Attachment:

Position the U-Bracket (Image #1) as shown in image #2, aligning it with the mounting points on the speaker enclosure. Securely hook the bracket onto the speaker enclosure.

2. Knob Tightening:

Tighten the two knobs located at the top and bottom of the bracket to firmly secure the speaker in place.

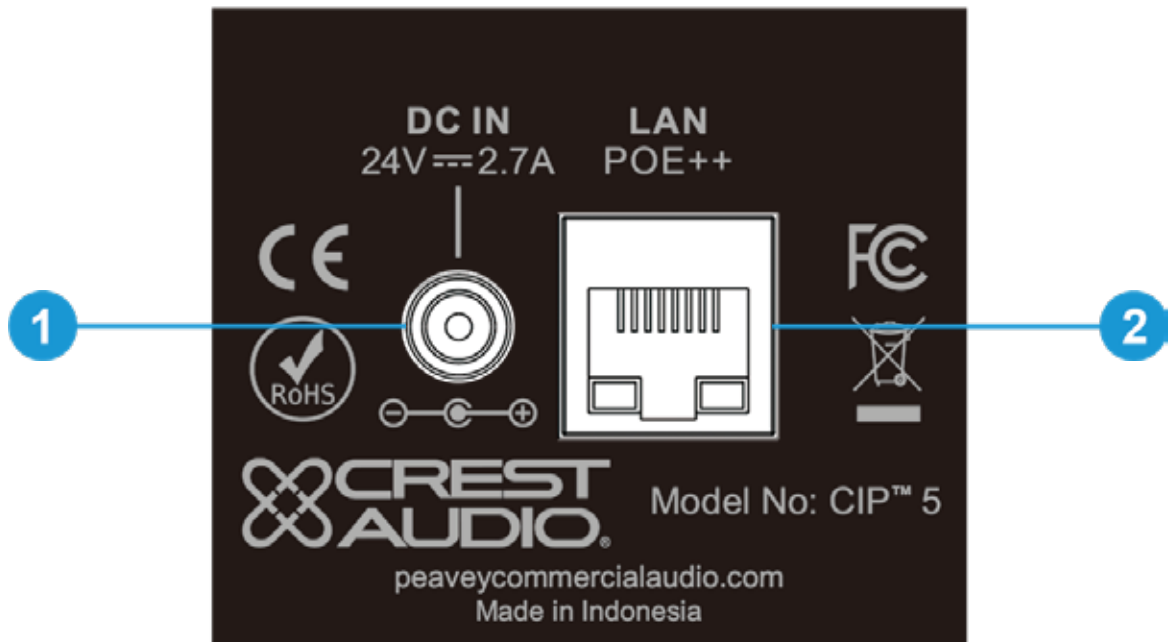
3. Angle Adjustment:

To adjust the speaker's tilt angle, loosen both the top and bottom knobs, set the speaker to the desired angle, and then re-tighten the knobs to lock it securely.

4. Wall Mounting Options:

The speaker can be mounted to the wall by using the mounting holes on the bracket, allowing for either vertical (straight) or horizontal (sideways) installation, depending on the specific site requirements.

Note: After completing adjustment and installation, ensure that all fasteners and screws are fully tightened to prevent any movement during operation. Once final alignment and aiming of the speaker have been confirmed, a good practice is to use medium strength blue threadlocker (LOCTITE® 242 or equivalent) on the knob shafts to prevent loosening with vibration.



1. DC IN 24 V 2.7 A:

External power supply input jack. Only for use when there is no PoE++ power available.

NOTE: As long as PoE++ power is available via the Ethernet cable LAN input (see below, section #2), the DC IN will be in standby mode. If PoE++ power fails, a connected DC IN will take over.

The DC IN requires a 5.5 x 2.1 mm barrel plug 12 mm in length, positive voltage on the inner connection. DC supply must be fully regulated pure DC. If power is supplied via this jack, then just a plain Dante signal over Ethernet will send audio to the CIP 5 speaker.

2. LAN / PoE++ Port:

LAN: Audio is input through the LAN via the Dante® system.

PoE++: Power is supplied through a PoE++ Switch or a PoE++ Injector box. PoE++ is specified under IEEE 802.3bt, this unit requires a type 3 PoE++ power device (nominally a 60 W capacity). A type 4 PoE++ power device can also be used (nominally a 90 W capacity), it will handshake with the CIP 5 speaker and provide the correct amount of power.

NOTE: Only Cat6a or higher type of Ethernet cable can be used for transmission of PoE++ power to PoE speaker systems! These cables may need to be rated for PoE according to the regulations in the US NEC. Each CIP 5 speaker system will require a "home run" connection. That is a dedicated run of Cat6a or higher cable from a PoE++ device for each speaker separately.

CAUTION: Use of PoE+ power devices as specified in IEEE 802.3at (devices limited to 30 W nominally), is not recommended, as it does not deliver the full power, and may cause the PoE switch to shut down.

RECOMMENDATION

To prevent electromagnetic interference, it is recommended to use STP (Shielded Twisted Pair) cables. Ensure that the metal parts of the connectors are electrically connected to the shield of the STP cable using conductive tape or an equivalent conductive method.

1. Connect the RX (Receiver):

Use a Cat6a or higher network cable to connect the Dante® port of the CIP 5 speaker to a PoE++ network switch or power injector.

If the RX speaker supports PoE++, the network switch will automatically supply power. If not, ensure that the speaker is connected to an external power source.

2. Connect the Dante TX (Transmitter) Device:

Connect the Dante TX device to another port on the same network switch.

3. Connect to the Computer:

Use a network cable to connect the computer running Dante Controller and Dante Virtual Soundcard to the switch.

4. Check Power and Indicators:

Ensure that the power indicators on all devices are working properly.

The Dante ports on both the RX speakers and TX devices should display a green network activity indicator.

5. Dante Audio Input:

For more information on the use of Dante for the audio signal input, and how to operate and control the Dante related software, please visit:

<https://www.getdante.com/meet-dante/what-is-dante/>

Software Downloads:

<https://www.getdante.com/products/software-essentials/>

Dante Controller User Guide:

https://dev.audinate.com/GA/dante-controller/userguide/webhelp/content/front_page.htm

Dante Virtual Soundcard User Guide:

https://dev.audinate.com/GA/dvs/userguide/webhelp/content/front_page.htm

6. MAC Address and IP Address:

You do find the individual MAC address of the unit on a label on the back of the CIP 5. (see below Image #3)

For easy identification in Dante Controller the last 6 digits of the MAC address are part of the device name., e.g. CIP5-3f8920.

Ex factory the IP mode is set to DHCP. For easy identification and install a static IP address can be noted on this label as well.

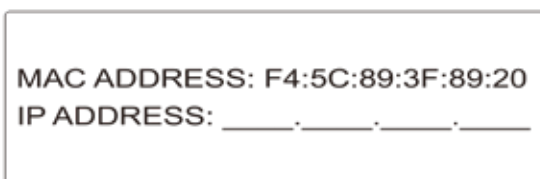


Image #3 (Example of MAC / IP address label)

NOTE: Dante® is a registered trademark of Audinate Pty Ltd.

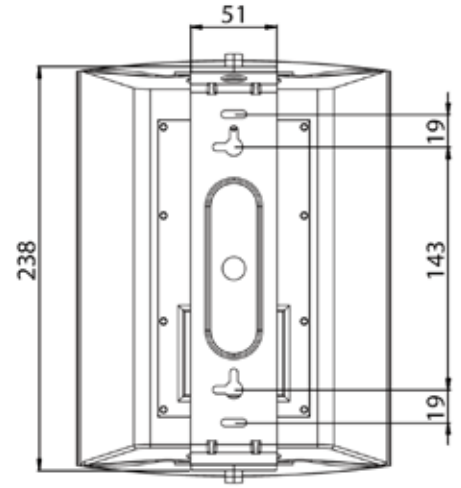
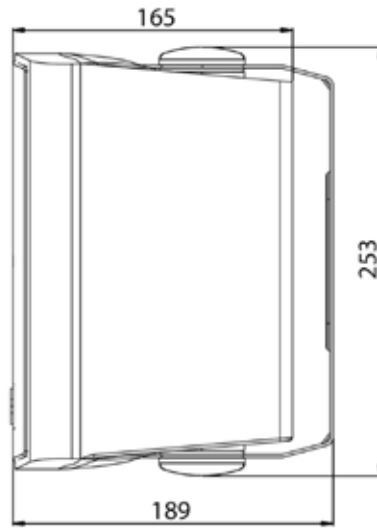
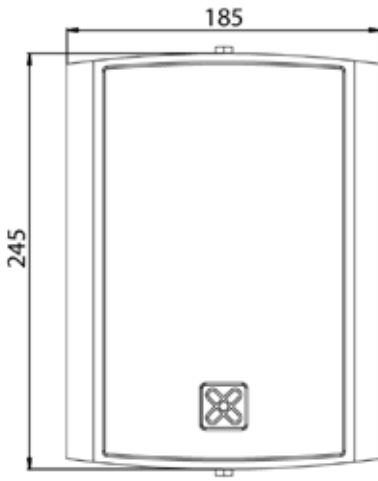


1 x U-Bracket

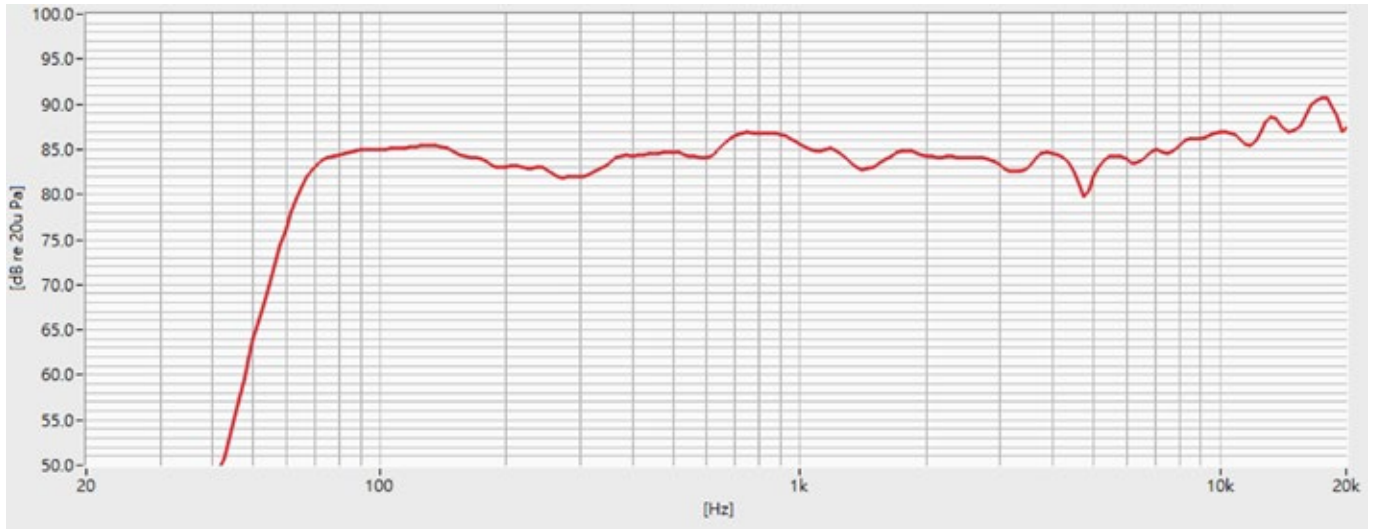


2 x Knob

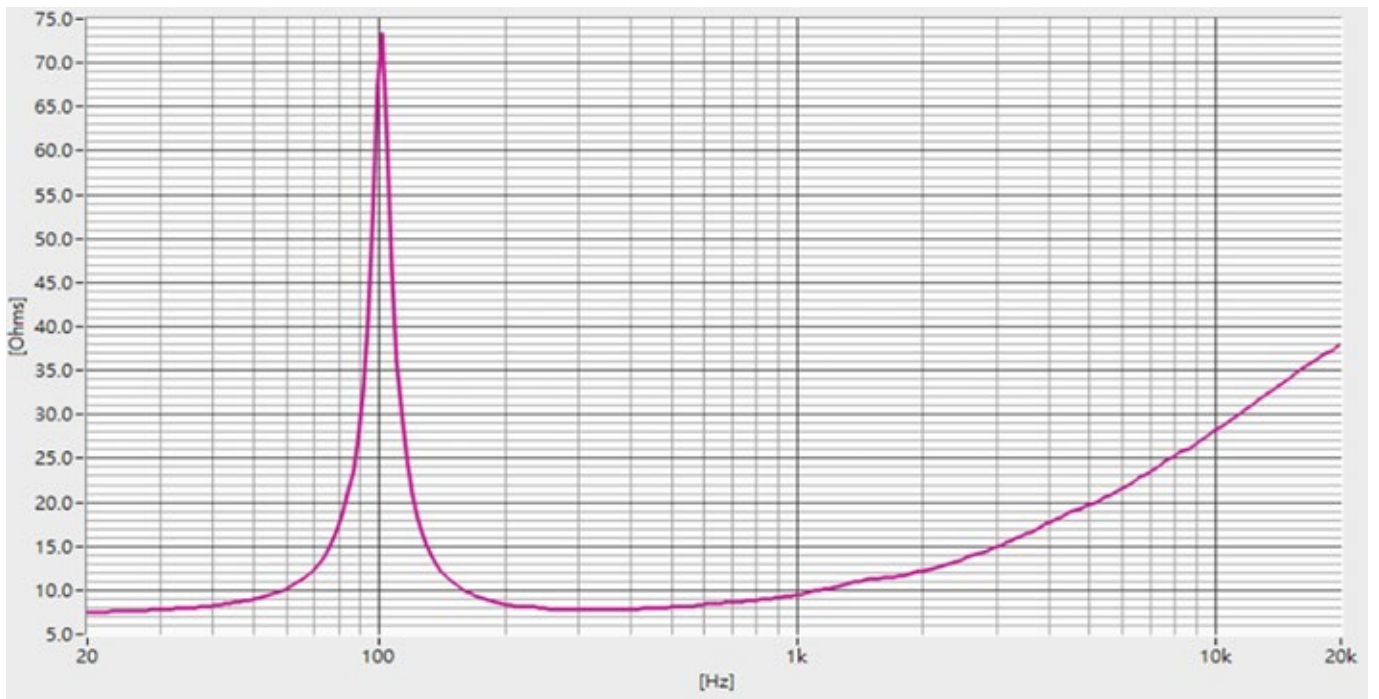
Unit:mm

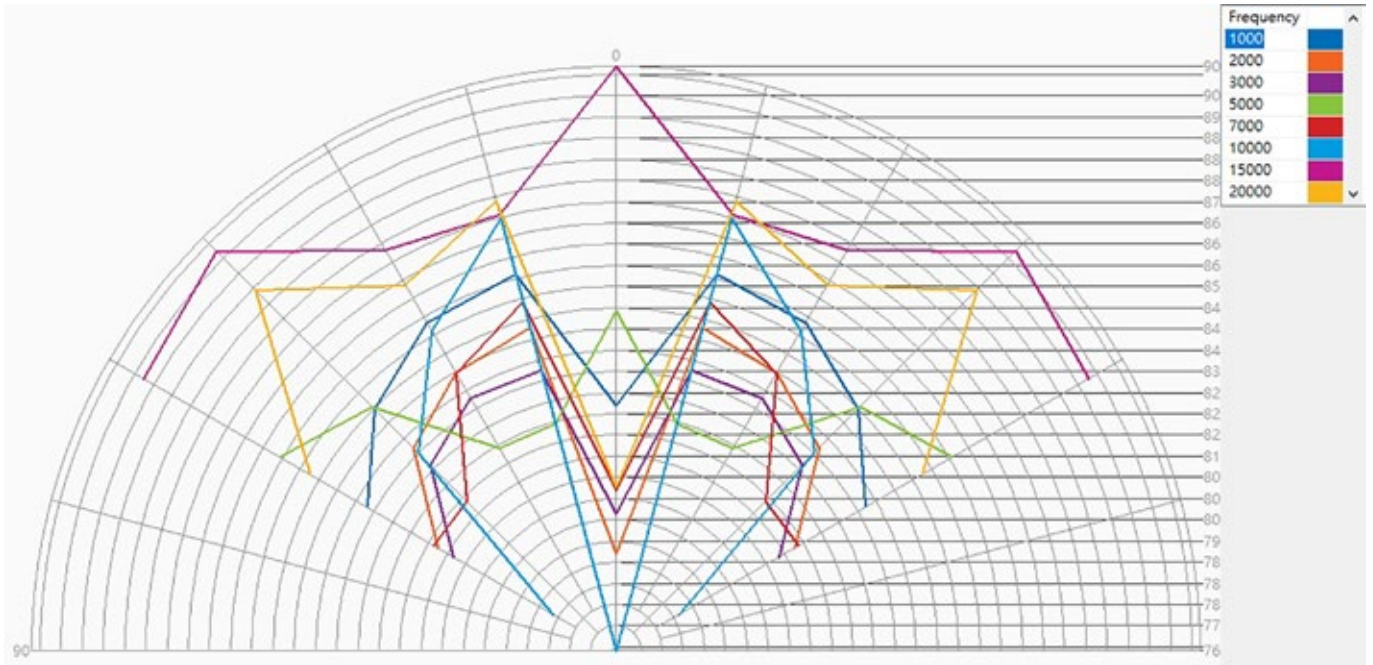


Frequency Response



Impedance





The compact powered PoE++ loudspeaker shall have a frequency response from 65 Hz to 20 kHz (10 dB below rated sensitivity, when wall mounted, with no external equalization). Nominal impedance shall be 8 ohms. The peak SPL with inaudible distortion shall reach 101 dB with music as a source, when measured at a distance of 1 m driven to full output capacity. The system shall consist of a 5.25 inch (133 mm) low frequency high performance transducer with 1 inch (25 mm) voice coil and a 0.78 inch (20 mm) ferrofluid cooled dynamic tweeter with PEI diaphragm and 0.78 inch (20 mm) voice coil. The nominal radiation pattern shall be 90° in horizontal plane and 60° in vertical plane. The powered, bi-amplified PoE++ loudspeaker shall have an RJ45 Ethernet connector on the rear panel. This connector shall accept a Dante or AES67 signal for audio, as well as the PoE++ power voltage per IEEE 802.3bt Type 3. There shall be an external, 5.5 mm by 2.1 mm barrel type, power input jack, which will accept external 24 V DC power supplies, capable of delivering 2.7 A of filtered DC power.

The system power amplifiers shall have an unfiltered frequency response of 20 Hz to 20 kHz which deviates no more than +0, -3 dB up to rated power, hum and noise better than 90 dB below rated power, and THD and IMD less than 1%. The woofer amplifier shall be capable of 20 watts sine wave power output into an 8 ohms nominal load, and the tweeter amplifier shall be capable of 20 watts sine wave power into 8 ohms nominal load, before compression and/or limiting engage.

The input signal shall be electronically divided into high frequencies and low frequencies by a line-level electronic crossover. The low frequencies shall be processed to provide bass boost, subsonic filtering and overall response shaping. High frequencies shall be equalized for response shaping.

The enclosure shall be constructed of injection-molded plastic with a UL94V0 flame rating, and reinforcing ribs internally. An U-Bracket shall be supplied with the speaker system for wall-mount use, held in place with two M6 threaded knobs, one each on top and bottom. An aluminum grille shall be provided for overall driver protection.

The loudspeaker shall be 9.96 inches (253 mm) high by 7.28 inches (185 mm) wide by 7.44 inches (189 mm) deep, weighing 5.7 pounds (2.6 kg) including the U-Bracket. The finish shall be a matte black paint in RAL 9004. Power requirements shall be: PoE++ IEEE 802.3bt Type 3, nominally via a 60 watts rated power injector or powered PoE++ switch (not included) or an external power supply of 24 V DC at 2.7 A (not included).

The compact PoE++ powered loudspeaker system shall be the Crest Audio CIP 5 with included U-Bracket.

Manufacturer Peavey Electronics Corporation
5022 Hartley Peavey Drive, Meridian, MS 39305
www.peavey.com

EU Rep. Authorized Rep Compliance Ltd., Ground Floor,
71 Lower Baggot Street, Dublin, D02 P953, Ireland
www.arccompliance.com



A black and white icon for recycling. It features a circular arrow symbol on the left. To its right is a rectangular box with the letters 'FR' in the top left corner. Inside the box is a crossed-out trash can icon.

**Cet appareil
et ses accessoires
se recyclent**

À DÉPOSER
EN MAGASIN

À DÉPOSER
EN DÉCHÈTERIE



OU



Points de collecte sur www.quefairede mesdechets.fr
Privilégiez la réparation ou le don de votre appareil !



www.crestaudio.com



Features and specifications subject to change without notice.

Crest Audio 5022 HWY 493 N. Meridian, MS 39305 (601) 483-5365 FAX (601) 486-1278



Logo referenced in Directive 2002/96/EC Annex IV
(OJ(L)37/38,13.02.03 and defined in EN 50419: 2005
The bar is the symbol for marking of new waste and
is applied only to equipment manufactured after
13 August 2005