



Commercial Audio

2020

MediaMatrix®  CREST AUDIO



Amsterdam Arena - Amsterdam, Netherlands



Contents

Airports and Transportation
Stadia And Arenas
Government
Entertainment
Live Performance Venues
Conference And Business Centers

Media Matrix: The Global Solution

Configuration And Control Software
Digital Signal Processors & Network Audio Interfaces
Audio Cards
Interface Wall Plates
Configurable Audio Bridge
Multiple Transport Protocol - Input/Output Control Nodes
Touch Screen Configurable Controller
Paging Announcement System

Crest Audio: The Live Leader

Tactus™ Digital Mixing System
Digital Mixers
Professional Powered Line Array Speaker System
Professional Passive Line Array Speaker System
Professional Touring Amplifiers
Industrial Multi Channel Power Amplifiers
Professional Touring Amplifiers
High Efficiency Touring Amplifiers
Networked Commercial & Industrial Amplification (Multi Channel)
Network Audio Interface Modules
Industrial Multi Channel Power Amplifiers
Ultra-High Efficient Install Power Amplifiers
Utility Amplifier
Installation Mixer Amplifiers
Mixer Amplifier
Wall Mount Mixer Amplifier

4 **Peavey Pro Audio: Every Link in the Chain**
6 Audio Processors
8 Wall Panels
10 Weatherproof Loudspeaker Enclosures
12 Powered Ribbon Loudspeaker System
14 Weather Resistant Speakers
Fixed Installation Loudspeaker Enclosures
16 Portable Sound System
18 Special Application Microphones
20 Distributors In Europe

32
34
38
40
44
46
47
48
50
52
53
54
55
57
58
59
60

62
64
65
66
70
72
74
75
76
78

*Dante® is a registered trademark of Audinate Pty Ltd.
CobraNet® is a registered trademark of Cirrus Logic, Inc.*

Beijing International Airport - Terminal 3

Communication is at the Heart of Everything We Do

Whether you're installing audio at a local house of worship, or tackling the AV challenges of a mega sports arena, it's also the core of what you do.

No matter your client's audience, Peavey Commercial Audio makes sure they receive every nuance of the message. Since 1965, Peavey Electronics has been the leader and innovator in how people create and send messages, and how they are received.

Peavey is there from the moment an audio message is created to the moment it reaches the ears of the audience. Every input, every patch cable, every wireless frequency, is vital.

And Peavey Commercial Audio is your partner along every link of that audio chain.

Airports and Transportation

Peavey Commercial Audio solutions provide messages, pages and background music to travelers in the world's largest and busiest airports, train and transit stations.



- Hartsfield-Jackson International Airport - Atlanta, Georgia
- Beijing International Airport, Terminal 3 - Beijing, China
- Orlando International Airport - Orlando, Florida
- Hong Kong International Airport - Hong Kong
- Heathrow Airport - London, England
- Barcelona Airport - Barcelona, Spain
- Sydney Airport - Sydney, Australia
- Barajas Airport - Madrid Spain

SEA Games - Kuala Lumpur, Malaysia

Our Technologies and Products Are Proven Daily, In Over 10,000 Installations Worldwide

Today, messages reach us virtually everywhere, expressed in new and more creative ways. Proven innovation and high performance are imperative to deliver those messages.

Your clients' messaging bullhorns are now transportation terminals, shopping centers, entertainment venues, corporate board rooms and sports stadia and arenas.

Peavey Commercial Audio delivers a wide variety of functions and capabilities to allow designers to realize any solution they can conceive

Our history is filled with milestones that celebrate our spirit of innovation and creation.

Peavey Electronics has logged more than any other company can claim; upwards of 130 active patents. We have more in process all the time, covering design innovations in digital signal processing, power amplification, loudspeakers and more.

Stadias and Arenas

The thrill of victory, the agony of defeat, the roar of the crowd, and the systems that deliver audio above the din. Peavey Commercial Audio joins games all over the world in the highest profile venues.



- Meadowlands Stadium - East Rutherford, New Jersey
- Oriole Park at Camden Yards - Baltimore, Maryland
- BC Place Arena - Vancouver, British Columbia
- World Cup Stadium - Seoul, South Korea
- Lucas Oil Stadium - Indianapolis, Indiana
- Beijing National Stadium - Beijing, China
- Nissan Stadium - Nashville, Tennessee
- Wembley Stadium - London, England

U.S. Senate Chambers U.S. House of Representatives Washington, DC

It Doesn't Matter What Size Stage You Stand On If No One Stands Behind You

Integrators in the commercial A/V space know us for pioneering the first distributed digital audio network system, MediaMatrix. From its debut in 1993, this computer-configurable audio system has evolved from the Mainframe to the NION platform, providing hundreds of inputs and outputs and processing capabilities with control options ranging from laptops to wall controllers to mobile tablets or smart phones.

As our technologies continue to expand deeper into video switching capabilities, digital mixing and extended control, usability, flexibility and reliability always remain our highest priorities.

Government

The sonic power behind the world's seats of power, Peavey Commercial Audio provides the entire signal chain; audio distribution, processing, amplification and control to support debate, deliberation and decision...



- U.S. Senate Chambers and House of Representatives - Washington, DC
- Canadian Senate and House of Commons - Ottawa, Ontario
- Australian Federal Parliament House - Canberra, Australia
- U.S. Department of Defense - Arlington, Virginia
- City Council Chambers - Boston, Massachusetts
- Sixth Judicial Circuit Court of Florida
- Chinese Parliament - Beijing, China
- The Reichstag - Berlin, Germany

Bellagio Hotel and Casino - Las Vegas



Go Ahead and Relax. We're Behind the Scenes, Making Your Experiences Memorable

79 Crest Audio networked power amplifiers, fed and controlled by MediaMatrix NIONs, power the legendary fountain show at the Bellagio Hotel and Casino, the most popular attraction on the Las Vegas strip.

With over 10,000 installations worldwide, it's nearly impossible to travel by air, attend a convention or enjoy the thrills of a theme park without hearing audio that has passed through Peavey Commercial Audio systems on the way to your ears.

Entertainment

When it's time for your "down time", we are concentrating on "up time". Our scalability, flexibility and reliability make MediaMatrix and Crest Audio the preferred solutions for themed entertainment, casinos, resorts and museums worldwide.



- Legoland Parks - Carlsbad, California & Winter Haven, Florida
- Islands of Adventure/Universal Studios - Orlando, Florida
- Hard Rock Hotel & Casino - Biloxi, Mississippi
- Atlantis Resort, Paradise Island - Bahamas
- Georgia Aquarium - Atlanta, Georgia
- Ferrari World - Abu Dhabi, UAE
- Six Flags Parks - United States
- Calgary Zoo - Alberta, Canada

Wang Theatre, Boch Center Boston, Massachusetts

All of the Emotion and Exhilaration of a Live Performance, Supported by the Logic and Calm of Outstanding Technical Performance

Peavey Electronics revolutionized the audio industry in 1993 with the introduction of MediaMatrix, the world's first digitally configured and controlled distributed audio system. MediaMatrix provides audio system engineers the tools to configure and reconfigure elaborate audio systems for the most demanding live environments.

Crest Audio burst onto the audio scene in the late 1970s with the singular goal of advancing live sound through bulletproof engineering. The low noise, high headroom and live sound features Crest Audio packed into consoles set new industry standards, making them indispensable on the touring circuit.

Live Performance Venues

With all of the challenges of presenting a live performance, engineers require rock-solid performance from their systems. Peavey Commercial Audio provides powerful and reliable solutions for touring sound and fixed installation live performance venues.



- Benedum Center for the Performing Arts - Pittsburgh, Pennsylvania
- New Jersey Performing Arts Center - Newark, New Jersey
- Charles M. Schulz Theatre - Anaheim, California
- Experience Music Project - Seattle, Washington
- Lion King Theatre - Lake Buena Vista, Florida
- Georg Freiderich Handel Halle - Germany
- Birmingham Hippodrome - England
- Hard Rock Live - Orlando, Florida

New York Stock Exchange

Innovation, Investment and Industry. Driven by the Exchange of Ideas, and Peavey Commercial Audio is the Conduit.

The world continues to shrink, fueled by around-the-clock, around-the-globe communication. People travel to all corners of the earth to meet and conduct business. Different languages are no longer barriers to being understood. Peavey Commercial Audio continues its global legacy in shortening the distance between all points. MediaMatrix provides the tools for designers to realize communications systems that erase borders. Crest Audio provides the networked amplification and mixing systems that bring all of the elements together and ensure intelligibility. In 2017, we continue our commitment to innovation with the introduction of nWare™ 2.0 software.

Conference And Business Centers

Wherever people gather for business, communication is paramount. Peavey Commercial Audio is there to provide pristine audio and convenient controls to enable and enhance the language of business.



- Hewlett Packard Training Center - Loveland, Colorado
- Daimler-Chrysler Virtual Reality Center - Germany
- Southwest Airlines Headquarters - Dallas, Texas
- Samsung Headquarters - Seoul, South Korea
- Skywalker Sound - Lucas Valley, California
- Shell Oil Headquarters - Houston, Texas
- Federal Express - Memphis, Tennessee
- Boeing Corporation - Chicago, Illinois
- Walter E. Washington Convention Center - Washington, DC
- Kuala Lumpur Convention Center - Kuala Lumpur, Malaysia
- Orange County Convention Center - Orlando, Florida
- Opryland Convention Center - Nashville, Tennessee
- Qatar National Convention Center - Doha, Qatar
- Phoenix Convention Center - Phoenix, Arizona
- Hawaii Convention Center - Honolulu, Hawaii
- MGM Grand - Las Vegas, Nevada

MediaMatrix®

The Global Solution

Peavey Electronics revolutionized the audio industry back in 1993 with the introduction of MediaMatrix, the world's first digitally configured and controlled distributed audio system. Today, MediaMatrix remains the most scalable, flexible and specified digital audio distribution, processing and control system globally.

MediaMatrix gives audio system operators the tools to configure and reconfigure audio and control systems in the world's most demanding environments, whether from a computer, touch screen or a mobile device. MediaMatrix serves the high-end audio market with the most powerful digital signal processors, software and user-control tools for creating the world's most elaborate and advanced audio systems via computer.

Together with its award winning nWare™ and Kiosk2Go™ programming and control suites, MediaMatrix continues its global legacy with dedicated feature, functionality and compatibility developments. Since its initial release in 2005, there have been more than 40 major updates to the nWare software toolset.

2017 marked a new milestone with the release of nWare 2.0. This major release features a configuration wizard with pre-configured project file templates to aid programmers in getting started on a variety of MediaMatrix applications. nWare 2.0 includes new devices for expanded control and processing and an improved graphical user interface with device tree filtering. Now easier to customize and use than ever, nWare firmly establishes its position as the AV industry's preferred standard in "drag-and-drop" system configuration, programming and operation.

Barajas Airport - Madrid, Spain



CONFIGURATION AND CONTROL SOFTWARE

nWare™

The heart and soul of MediaMatrix® commercial audio is the nWare™ suite. This multi-faceted software package includes all the tools required to design, program, control and monitor any scale audio system.

Development of nWare is ongoing, resulting in new product releases that provide innovative features and capabilities unique to the MediaMatrix product set. The amalgamation of the NION hardware integrated with the deep and powerful features of the nWare software suite ensures the flexibility and reliability required of large scale systems encompassing thousands of inputs and outputs.

One brilliant aspect of nWare is its versatility and overall project design synergy. The designer virtually selects and implements the various MediaMatrix hardware pieces, such as a NION processor or the CAB™ audio bridges while the integrator simultaneously builds the actual system. Upon project implementation, nWare will verify the design, deploy the project, parse the instruction set across the available DSP resources and balance the workload among the NION processors. Once the project is deployed, it can run connected to, or independently of, the nWare application removing limitations and allowing projects of an almost infinite scale.

nWare logic circuit programming capabilities enable the programmer to create conditional responses within the system and match functions across numerous projects. The use of a full Python scripting library enables the advanced programmer to create unique processing and control objects. Specific functions or processes may also be wrapped up as “plug-ins” and saved, allowing objects to be shared easily between nWare projects.

The nWare graphics suite of design tools allow designers to import custom graphics files to create more intuitive user interfaces.

Imagine creating a user interface based on the floor plan of a convention center, showing different paging zones color coded to quickly identify what is occurring in each zone. Navigate with the touch of a finger to any related function such as EQ, delay or volume control using any touch device, laptop or tablet over a local area network.

For cases where division of functionality is desired, nWare supports “project linking”, allowing individual projects to be deployed but have signal and functions shared between them to perform as a cohesive, overarching system.



2020 marks an important milestone with the launch of the new and improved nWare™ 2.1. This major release features a configuration wizard with pre-configured project file templates to aid programmers in getting started on a variety of MediaMatrix applications. nWare 2.1 includes new devices for expanded control and processing and an improved graphical user interface with device tree filtering. Now easier to customize and use than ever, nWare firmly establishes its position as the AV industry’s preferred standard in “drag-and-drop” system configuration.” Together with its award-winning nWare™ and Kiosk2Go™ programming and control suites, MediaMatrix continues its global legacy with dedicated feature, functionality and compatibility developments. Since its initial release in 2005, there have been more than 40 major updates to the nWare software toolset.

In 2014 Peavey Commercial Audio and MediaMatrix were again recognized by their peers with being awarded the converted AV Magazine Award for “Best Audio Product” for the Kiosk2Go™ HTML-5 supported graphical user interface software suite.

Kiosk2Go is a ground-breaking industry first in the Audio Networked/DSP market. The advanced development on a seasoned platform such as NION is a remarkable engineering achievement being the world’s first open architecture drag and drop audio DSP configuration and control software GUI development suite. Kiosk2Go provides audio engineers, programmers, integrators and more crucially end users with a means to control all parameters of a MediaMatrix NION audio system both at configuration and run-time on a variety of platforms including PC, Mac and Android.

Using the latest HTML-5 technology of websockets running over WiFi any given user can move to any location in the sound field and adjust the system to provide optimum performance.

Kiosk2Go projects can be tailored to provide extensive levels of system access, from the system designer gaining direct access to all system parameters to a non-technical user requiring only simple zone selection or volume control. The audio project is compatible with all the main browsers and can be configured using custom png, bitmap and SVG images to present an intuitive and visually attractive presentation of the audio project to the user.



NION®

Nion® n6 CobraNet® SKU-03510460 | **Nion® n6 Dante®** SKU-03513960 | **Nion® n3 CobraNet®** SKU-03510450 | **Nion® n3 Dante®** SKU-03513950
Nion® nX CobraNet® SKU-03510570 | **Nion® nX Dante®** SKU-03513940 | **Nion® nE** SKU-03601470

Engineered for longevity, flexibility and mission critical applications, the MediaMatrix® NION® proves that a well designed platform will serve installations for decades to come. Constantly renewed by new releases of nWare™, NION still leads the market in audio quality, depth of processing, versatility and scalability. Designed for stable, efficient and robust performance, NION features a 448-channel audio bus (XDAB) for seamless expandability. Low-latency audio makes NION perfect for performance audio projects, in addition to applications where a massive amount of audio processing is required. A floating point- DSP engine is coupled with the world's most efficient high performance audio algorithms making NION the most powerful configurable DSP core ever built for commercial, engineered applications.

nWare™ programming software includes advanced configuration and control tools (including an optional nControl™ software/hardware package), support for SNMP and vector-based graphical user interface. Intuitive network-centric role assignments. NION supports both CobraNet® & Dante® network audio streaming protocol option including bridging for hybrid systems via the NION's 448 Channel XDAB bus. NION and nWare make an unbeatable product for enterprise, large and small projects alike that will change the way you design sound and control systems forever !

DISTRIBUTED OR CENTRALIZED PROCESSING? The debate between centralized and distributed processing models is long over. NION supports a robust infrastructure with systems built with modular network nodes. Each node includes an extremely powerful DSP engine, configurable I/O and a robust, 448-channel, low-latency expansion bus (XDAB). From simple stand-alone systems to large hybrids of multiple configurations, NION supports any combination of processing, I/O and control.

SOFTWARE nWare™ is a robust, vector-based software interface providing powerful, intuitive tools for configuring, controlling and managing NION systems. nWare™ and its associated Kiosk & award winning Kiosk2Go™ HTML5 control client make it easy to manage audio transport plus control, redundancy and hardware role assignments across any size implementation. And best of all, the industry's most comprehensive and continually expanding device set is included.

nWare's features and performance have received a major update with the release of nWare™ 2.1, providing a new enhanced user interface and a set of programming templates to get designers started on MediaMatrix projects in a variety of applications and markets.



Nion Series Audio & Control Processors

Model	nE	nX	n3	n6
DSP Chips	3	3	3	6
Front Panel Control	X	✓	✓	✓
XDAB Expansion	X	X	✓	✓
Network Audio Exp.	✳	✓	✓	✓

MODULAR All NION audio processing nodes provide four (4) scalable I/O card bays supporting the Nio™ Series of modular analog audio input/output cards. NION nodes can be ordered with optional Dante® or CobraNet® modules. Dante and CobraNet NION's can co-exist in a single XDAB™ stack supporting dual network audio protocols plus audio bridging between protocols.

AUDIO CARDS

NIO™ Cards

NIO™ 4x4 SKU-033511710 | **NIO™ 8i** SKU-03311230 | **NIO™ 8o II** SKU-03616520 | **NIO™ 8ML II** SKU-03311220
NIO™ AEC SKU-03006880 | **NIO™ AES** SKU-03458400

Modular analog audio input/output cards with exceptional high quality analog-to-digital / digital-to-analog converters for the NION® series of digital audio processing products. 24 Bit converters configurable up to 96kHz sample rate. Mini Euro connectors for easy connection. Up to four NIO™ cards may be loaded in a NION processing frame. Cards supported and configured using MediaMatrix® nWare™ configuration and control software.

NIO™ 4x4



The NIO-4x4 Mic/Line Input/Output Card is a four-channel mic/line level input and four-channel line level output device.

- Inputs: 4 balanced mic or line level analog
- 48VDC available on a per channel basis
- Input sensitivity: +33 to -42 dBu
- Analog gain: -3 to +60 dB
- Outputs: 4 balanced line-level analog
- Full scale output: +24, +18, +12, +6 dBu
- Output impedance: 100 ohms (Balanced)

NIO™ 8i



The NIO-8i Line Input card is an eight-channel line level input device.

- 8 balanced line-level analog inputs
- Input sensitivity: +30 to +3 dBu
- Analog gain: -3 to +24dB

NIO™ 8o II



The NIO-8o Line output card is an eight-channel line level output device.

- 8 line level output audio channels
- 24 bit A/D
- 48 or 96 kHz audio sampling rate supported

NIO™ 8ML II



The NIO-8MLII Mic/Line Input card is an eight-channel mic/line level input device featuring:

- 8 balanced mic or line level analog inputs
- 48VDC available on a per channel basis
- Input sensitivity: +33 to -42 dBu
- Analog gain: -3 to +60 dB

NIO™-AEC



AEC audio Input & digital signal processing card. Eight (8) balanced mic/line inputs with Acoustic Echo Canceling (AEC) algorithms on each channel. Optional source reference audio from card input or from any point in Nion audio design path for cancellation. Processed and unprocessed audio supports different paths.

- 48VDC available on a per channel basis
- Input sensitivity: +21 to -42 dBu
- Analog gain: -3 to +60 dB

NIO™-AES



AES Input/Output card is an AES3 digital audio I/O device configured in eight pairs of mic/line (16 Ch total). Input or Output channel pairs selected individually via nWare.

- S/PDIF supported via on board dip switches
- 48 or 96kHz audio sampling rates

Network Audio Interface Cards

DANTE® MDM32 SKU-03617230 | CobraNet® CM-1 SKU-03513990

CobraNet® CM-1



The CobraNet® CM-1 streaming audio network interface module supports 32i x 32o channels over UTP with primary & secondary network connections via RJ-45 including serial bridging control 8 & 9-bit data formats. (Nion's / Cab's) The CobraNet® CM-2 is similar to the CM-1 but supporting 16i x 16o audio channels & serial bridging 8-bit data format only. (CAB4n)

DANTE® MDM32



The MDM32 is a network audio interface module supporting the Dante® streaming audio protocol within the MediaMatrix Nion series of Digital Signal Processors plus CAB4n configurable audio I/O bridges. Offering Low-latency, high quality audio across a GBit Ethernet with both primary and a secondary redundant connection for glitch free failover. The DBAM supports 32x32 digital audio inputs and outputs via an Audinate Brooklyn II module.

INTERFACE WALL PLATES

nWall™

NWALL™ 2.0 SKU-03601640 | NWALL™ 0.2 SKU-03609200 | NWALL™ 1.1 SKU-03609190

The nWall™ eliminates the need for long runs of analog cables terminated in racks of patch bays. As the connection to the nWall uses Ethernet cable with network standard RJ45 crimp connectors, the installation time, number of terminations required and associated cost are all minimized. A MediaMatrix® nWall™ fits within a standard 2 gang North American NEMA back box and is powered over the attached network cable from a network PoE capable switch or power injector conforming to IEEE 802.3af. Three variations of nWalls are available for input, output and mixed I/O requirements supporting the CobraNet® streaming audio protocol.

NWALL™ 2.0



- 2 channel mic/line balanced XLR inputs (latchless) with 12V phantom power
- 2 channel unbalanced line level TRS inputs 1/8th inch mini jacks summed mono mixed with XLR; -8dBu (nominal) +12 dBu (peak)
- Rotary 3 step switch for XLR connectors selectable gain (nom/max): #1 (+4dBu/+24dBu) - #2 (-26dBu/-6dBu) - #3 (-56dBu/-36dBu)

NWALL™ 0.2



- 2 channel balanced line level XLR outputs (latchless) +10dBu (max)
- 2 channel unbalanced line level TRS outputs 1/8th inch mini jacks summed mono with adjacent XLR; -8dBu (nominal) +12 dBu (peak)
- Rotary 3 step switch for XLR connectors selectable gain (nom/max): #1 (-8dBu/+12dBu) - #2 (-6dBu/+18dBu) - #3 (+4dBu/+18dBu)

NWALL™ 1.1



- 2 input channel - balanced mic/line XLR + TRS 1/8th inch mini jack unbalanced inputs (left side) with
- 2 output line level XLR balanced + TRS 1/8th inch mini jack unbalanced channels (right side)
- CobraNet® (2 Tx / 2 Rx) network audio input / output (I/O) panel.
- I/O sensitivity / gain structure plus 3 step switch same as nWall 2.0 and 0.2 receptively per side.

MM™ 4 Cards

MM™ Mic 4 SKU-00482590 | MM™ LINE 4 SKU-00482580 | MM™ OUT 4 SKU-03482660

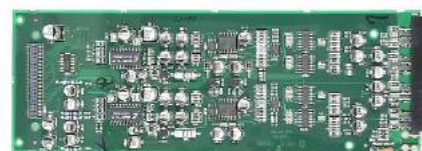
MM™ Mic 4



Provides four channels of studio grade electronically-balanced microphone inputs:

- 4 channels of electronically balanced microphone inputs
- Each channel software-controlled 48 Volts phantom power
- Each channel software-controlled analog gain: to +60 dB

MM™ LINE 4



Provides four-channel electronically-balanced line level inputs:

- 4 channels of low impedance electronically balanced inputs
- Sensitivity selectable per channel; 12, 18, 24 & 30 dBu
- Each channel software-controlled analog gain: -95 to +30dB

MM™ OUT 4



Provides four channels of electronically-balanced line level outputs:

- 4 channels of low impedance electronically balanced outputs
- Sensitivity selectable per channel; 6, 12, 18 & 24 dBu
- Each channel software-controlled analog gain: -95 to +30dB

CONFIGURABLE AUDIO BRIDGE

CAB™ 4n

CAB™ 4n-CM2 SKU-00510670 | CAB™ 4n-Dante® SKU-03010880

The CAB™ 4n series of Configurable Audio Bridges supports both Dante® or CobraNet® modules and is designed specifically for NION®-based systems. The CAB 4n break-out-boxes feature MediaMatrix® Scalable I/O Architecture, with support for the popular line of MediaMatrix I/O modules (up to four modules configurable for 16x0, 0x16, 12x4, 4x12 or 8x8 operation).

All inputs can be configured in groups of four channels for microphone or line level in any of the available configurations. The CAB 4n features a versatile, performance-oriented GPIO port, which provides configurable contacts for analog, digital and dry contact use in addition to a Fault Relay for hardware indication of the unit status, NO and NC connections, with contacts rated for 1 Amp.

All GPIO ports are configurable from the nWare™ software and include an easy DIN rail mounting system for efficient rack wiring and service.

- “Buddy Link” BNC in/out connection provides automatic redundancy
- Advanced audio routing when integrated with NION
- 4 “Form C” relays with NO and NC connections
- Scalable I/O Architecture using MM-4 Series of I/O cards
- Front panel network status fault indicators plus i/o level meters/Ch
- 48kHz sample-rate, 24-bit quantization, 64x over-sampling
- Front panel audio metering
- Universal power supply (100-240V 50-60Hz)

CAB™ 4n-Dante® — Front



CAB™ 4n-Dante® — Back



CAB™ 8n

CAB™ 8n SKU-03006780 | CAB™ 8n Rack Shelf SKU-03510000

The CAB™ 8n features eight audio channels that can be individually configured as inputs or outputs together with an integrated CobraNet® streaming audio network port designed specifically for NION®-based systems providing unparalleled configuration options for an audio interface.

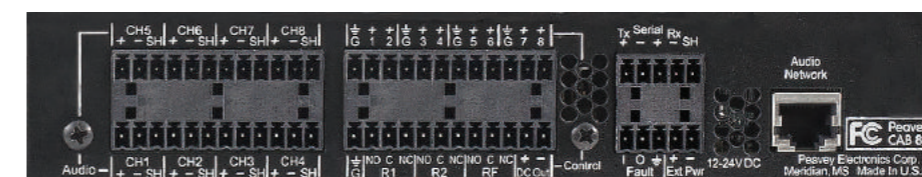
The CAB 8n is a half-width, 1RU-tall device capable of utilizing Power over Ethernet (PoE). This compact size allows convenient mounting in equipment racks and under tables, while the unique I/O configuration means all the inputs and outputs can be handled by a single box. All connected via a single Ethernet cable when used with a standard PoE network switch or power injector.

A 12-24VDC power inlet is included for situations where PoE is not available. GPIO and serial bridging are also available on the CAB 8n, including eight programmable pins and two Form C relays plus serial bridging over Ethernet capable of handling RS-232, RS-422 and RS-485.

CAB™ 8n — Front



CAB™ 8n — Back



- 8 analog audio channels, individually configurable as inputs or outputs
- Audio signal LEDs on the front panel
- 8 programmable GPIO pins plus 2 Form C relays
- Fault Relay featuring N/O and N/C connections
- Power over Ethernet (PoE) or external 12-24VDC power supply (provided)
- Rack mountable, 1RU tall by half rack width

MULTIPLE TRANSPORT PROTOCOL - AUDIO NETWORK INPUT/OUTPUT CONTROL NODES

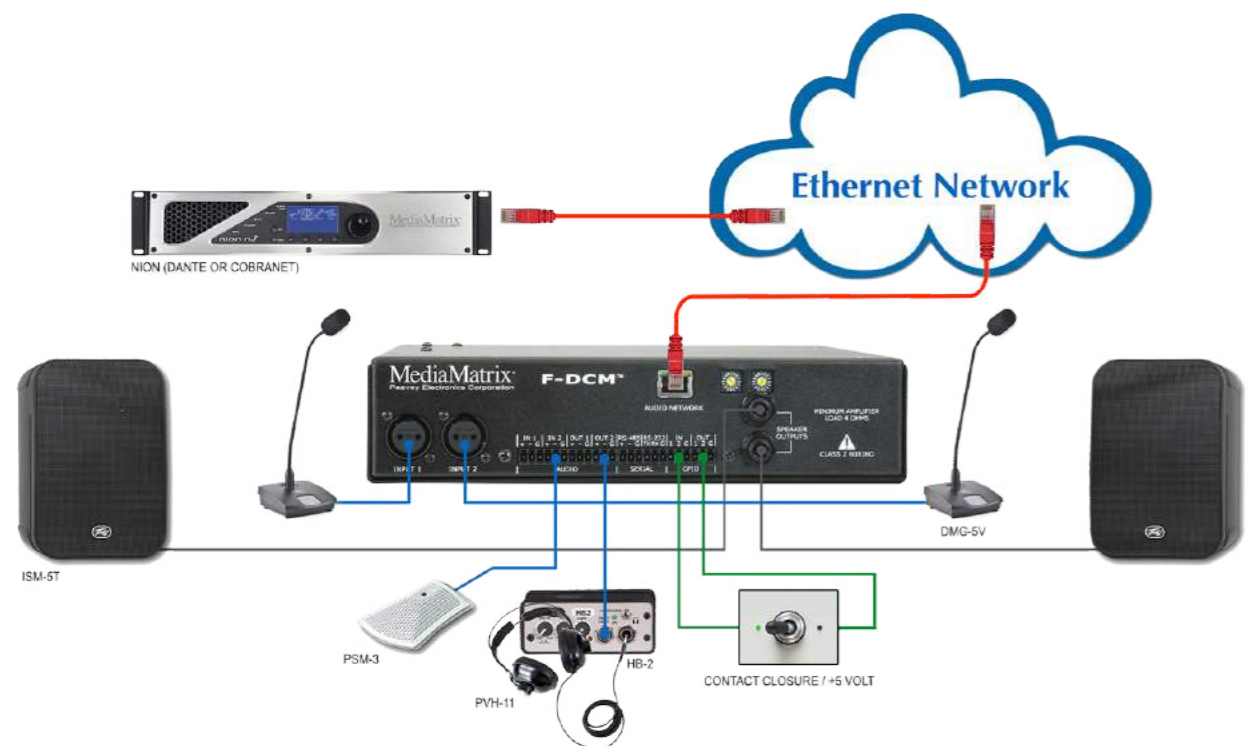
DCM™ Series

F-DCM™ - 2x2 Network Audio SKU-03612810

The F-DCM™ features two balanced microphone or line inputs on XLR or Euro connectors with 48V phantom power and two transformer balanced line level outputs on Euro connectors. It also features an integrated 35 watt per channel power amplifier for driving local loudspeakers via 1/4" TS connectors.

The unit also provides extended RS-232 and RS-485 serial control via the CobraNet® or Dante® network, plus two DLIO (Digital Logic Input / Output) connections for optional contact closure or +5V output selection. The unit also allows for remote control of the mic level, phantom power on/off and input mute for each channel. The F-DCM unit is housed in a compact and durable 18-gauge steel chassis that can be mounted easily under tables, in millwork or in equipment racks and housings. The unit features an internal switchable power supply (120V – 240V, 50/60Hz at 20W), which connects via an IEC connector in the rear panel.

The unit works in conjunction with other MediaMatrix devices, including NION® and CAB, and is configured and managed using nWare™.



F-DCM™ — Front



F-DCM™ — Back



- Two (2) XLR balanced audio connectors for microphone or line level input
- Two (2) Euro balanced connectors parallel with XLR connectors for mic or line level inputs
- 48V phantom power on both pairs of input connectors
- Two (2) Euro balanced line level audio output connectors
- Convenient front-panel rotary controls for unit ID
- One (1) RJ-45 network audio port supporting both CobraNet® and Dante® protocols
- One each Euro connectors for RS-232 & RS-485 extended serial control via network
- Two (2) Euro connectors for DLIO digital logic input/output - contact closure input / +5V output
- Two (2) 1/4" TS jacks provide amplified output - 35W @ 4Ω per channel to loudspeakers
- Features an internal switchable universal power supply 100-240V 50/60Hz @ 20W via an IEC connector
- Simple configuration via nWare™

MULTIPLE TRANSPORT PROTOCOL - AUDIO NETWORK INPUT/OUTPUT CONTROL NODES

nControl™

nControl™ SKU-03006770

Engineered for large, enterprise and mission critical applications the MediaMatrix® nControl™ provides high-end processing power for NION® control applications. It is particularly suited to running complex Python scripts and control functions distributed through very large systems.

While the powerful DSP capabilities of the NION® process the audio in an installation, the nControl seamlessly complements the NION by handling the control, monitoring and scripting functions.

As well as providing raw processing power, the nControl can also record and play back multi-channel audio via CobraNet®, and includes 500GB of storage for media files with optional expansion up to 4TB of RAID1 storage. Data files can also be copied to and from the nControl via FTP.

nControl™ — Front



Optional supported MediaMatrix® cards

- PCI CobraNet® network audio interface card
- 8x8 analog audio interface card
- AHC-1 digital control inputs / relays card

Internal

- Intel Pentium E2160 Dual Core 1.8GHz processor
- Two (2) 250 GB 7200 RPM SATA-300 drives configured as RAID1 array
- Windows embedded operating software

Front Panel

- LED status window: Shows Power LED and Hard disk LED.
- Lock: Secures front panel to chassis

Behind front panel

- USB ports: One (1) recessed for hardware license key plus two (2) standard ports for general software update

Rear panel connections

- Two (2) Gigabit Ethernet RJ-45 ports, expandable to 10 Gigabit Ethernet for control and communications via Ethernet
- USB Data: Six (6) USB data ports
- Serial: Four (4) Male DB-9 supports general purpose RS-232 communications
- Seven (7) PCI expansion slots: 5 x PCI / 1 x PCIe x 4 / 1 x PCIe x 16
- Mains Power: 100v > 240v 47/63 Hz 500W A/C via dual redundant power supplies
- Rack mountable, 3RU package

The audio interfacing capabilities of the nControl can be tailored to match the requirements of the installation by adding one or more 16 channel CobraNet® interface cards. Similarly, one or more relay cards can be added to provide additional digital control inputs and relays for switching external devices, interfacing with switches, LEDs, custom circuitry, and so on. The unit also includes four RS-232 serial interface ports with support for further multi-function serial ports.

The nControl offers real time control and monitoring of network devices via SNMP. The system provides health and status information for devices such as Ethernet switches, uninterrupted power supplies NION® processors and Crest Audio® network series of intelligent power amplifiers.

The nControl is configured and controlled using the award-winning nWare™ & Kiosk2Go™ configuration and control suites supporting SNMP, RATC and Python control and logic protocols.

TOUCH SCREEN CONFIGURABLE CONTROLLER

nTouch™ 180HD

nTouch™ 180HD SKU-03615870

The nTouch™ 180HD is a 7" diagonal intelligent touch screen controller that features a clean modern design that can be mounted in any number of handy locations to provide a rich graphical user interface that can be tailored to any control requirement. New high resolution graphics and a responsive capacitive touch screen provide the user experience that your customers now expect.

The nTouch™ 180HD utilizes an embedded version of the award-winning nWare™ & Kiosk2Go™ software suites. This means that anything that can be designed with nWare can be controlled by the nTouch™ 180HD. The onboard processor can also host MediaMatrix projects much the same as the nControl™ server but for small to medium size applications allowing for control and monitoring of Peavey Commercial Audio plus 3rd party products and devices. Three mounting options are available; surface, rack and in-wall mounting (available separately).

nTouch™ 180HD — Front



Kiosk™ 180HD

Kiosk™ 180HD SKU-03616490

When simple touch screen control is required the Kiosk™ 180HD is the smart and affordable choice. Still packed with the control and connectivity features of the nTouch™ 180HD but purpose engineered to act as a simple client interface controller with the NION® Series of audio and control processor frames.

The Kiosk™ 180HD is perfect for desktop, wall mounted or in-rack touch control supporting the award-winning Kiosk2Go™ graphical user interface (GUI) control suite.

Kiosk™ 180HD — Front



PAGING ANNOUNCEMENT SYSTEM

PageMatrix™ Series

PageMatrix™ Command Center™ SKU-00386430 | PageMatrix™ Station Ten™ — Desktop SKU-00386460
 PageMatrix™ Station Four™ — Wall Mount SKU-00476040 | PageMatrix™ Station Four™ Desktop SKU-00386450

Amongst the most complex applications in the commercial audio industry, paging is made easy with PageMatrix™, our basic paging plug-in for NION® processing systems.

PAGEMATRIX™ COMMAND CENTER

The PageMatrix Command Center™ is a paging management host that works seamlessly with NION® allowing paging system design to be simplified, more intuitive and cost-effective.

A stand-alone software application, paging controller and a host of remote paging stations provide an integrated and flexible approach for many paging applications.

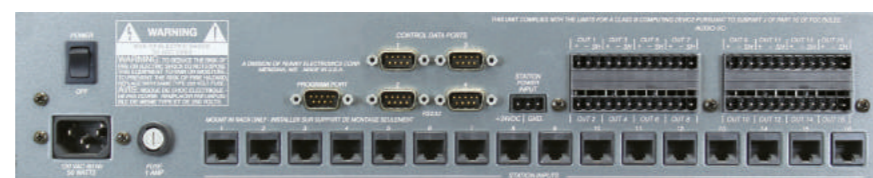
With MediaMatrix DSP processing at the core, PageMatrix provides the end user simple, transparent access to MediaMatrix's powerful routing capabilities. With the integral .WAV player software device, remote access of pre-recorded messages is only a button away.

- Up to 16 stations are powered via CAT 5 cable terminated by an RJ-45 connector
- 99 page zones are available via MediaMatrix NION
- 24VDC input for emergency back-up of stations is provided
- Supports up to 4 MediaMatrix DSP head-end systems
- Supplies 24VDC to remote stations
- PageMatrix configuration software included

PAGEMATRIX™ Command Center — Front



PAGEMATRIX™ Command Center — Back



PAGEMATRIX™ STATION TEN - DeskTop



The PM Station Ten- Desktop provides 99 zone combination presets, programmable via the PM Command Center.

- Two (2) electronically balanced mic inputs; 3-pin XLR low-Z plus 5-pin XLR auxiliary low-Z
- 99 zone presets, programmable via PM Command Center
- Mic level control +25dBu full scale
- 20 x 2 backlit LCD display
- No local power required; 24 VDC from PM Command Center

PAGEMATRIX™ STATION FOUR — Wall Mount



The PM Station Four - Wall is a flush wall-mount, four-button, four-zone paging station.

- Electronically balanced 5-pin XLR low-Z microphone input.
- 4 zone presets, programmable via PM Command Center
- Mic level control +25dBu full scale
- Handheld push-button PTT type mic
- No local power required; 24 VDC from PM Command Center

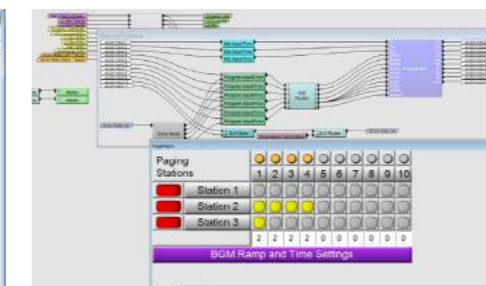
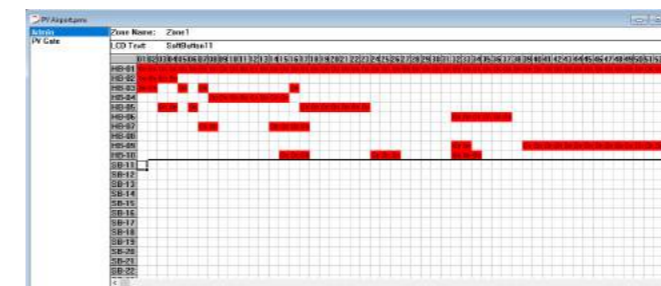
PAGEMATRIX™ STATION FOUR DeskTop



The PM Station Four - Desktop is a four-button, four-zone desktop paging station.

- Two (2) electronically balanced mic inputs; 3-pin XLR low-Z plus 5-pin XLR auxiliary low-Z
- 4 zone presets, programmable via PM Command Center
- Mic level control +25dBu full scale
- No local power required; 24 VDC from PM Command Center

PAGEMATRIX™ Software





The Live Leader

Legendary for its powerful and reliable touring-class sound reinforcement products, Crest Audio is a global leader in designing and manufacturing power amplifiers for live, commercial and networked sound systems, and a complete line of mixing consoles for live and installed audio markets.

Crest Audio burst onto the audio scene in the late 1970s with singular goal of advancing live sound through bulletproof engineering. The low-noise, high headroom and live sound features Crest Audio was able to pack into its mixers set a new industry standard, and they immediately became indispensable on the touring circuit. Crest Audio soon found ways to incorporate more punch into everything from preamps to loudspeakers and everything in the rack in between.

Crest Audio continues its legacy of high performance audio mixing with the 2017 release of the revolutionary Tactus Digital Mixing System. Tactus provides all of the versatile features of touring class digital consoles without the impractical size and bulk of most digital desks and without the complicated menus necessary to access important functions.

The Tactus System provides up to 256 channels of high-quality audio, routed and distributed over a data network with super-low latency and an uncompressed 96kHz audio sample rate. The "Tactus.Stage" and front-of-house "Tactus.FOH" interfaces plus the "Tactus.Control" provide a portable and tactile set of faders and controls to accompany the extensive touch-screen controls of the Waves LV-1 live mixing software.

A photograph of a man, Tom Jones, working as a live sound engineer at an outdoor event in Edinburgh. He is seen from the side, focused on his work. He is wearing a dark blue polo shirt with a patch on the sleeve. In front of him is a large digital mixing console with a monitor displaying a software interface. To his right is a laptop and another monitor. The background shows a large crowd of people seated on the grass, with trees and buildings in the distance under a bright sky.

Tom Jones - Edinburgh

Tactus™ Digital Mixing System

Tactus™.Stage SKU-03612030 | **Tactus™.FOH** SKU-03616330 | **Tactus™.Control** SKU-03615110

The Tactus Digital Mixing System redefines mixing by providing a simple, customizable touch-screen operating interface that puts all of the audio routing, processing and mixing tools within easy and immediate reach.

Designed to work with the new Waves LV1 eMotion™ Mixer for SoundGrid®, the Tactus Digital Mixing System is one of the most innovative and feature-rich digital audio mixing platforms ever devised. In addition to providing a full complement of professional features, the Tactus system allows the use of Waves audio processing plug-ins for live events.

The Tactus hardware is comprised of the Tactus.FOH™, the audio processing core for the system, and the Tactus.Stage™, a 32-in/16-out remote stage box. The modular capability of the Tactus Digital Mixing System, which interconnects via standard Gigabit Ethernet cabling and an internal Gigabit switch, allows multiple configurations in a range of channel counts to best suit each application.

Tactus™.Stage

Tactus™.Stage SKU-03612030

- 32 microphone/line inputs
- XLR mic and TRS 1/4" line inputs
- 16 line outputs
- Mic input accepts a +27 dBu input signal without a pad
- High performance digitally controlled microphone preamps
- 48-volt phantom power switchable on every microphone input
- Two AES digital outputs
- Integral gigabit Ethernet switch for easy networking
- Waves® SoundGrid™ digital audio network protocol
- Supports sample rates of 44.1 kHz, 88.2 kHz and 96 kHz
- Headphone output with level control
- MIDI in and switchable out or thru

The Tactus.Stage includes 32 microphone/line inputs and 16 line plus to 2 AES outputs. The digitally controlled high-quality mic preamps feature ultra-low input noise, high slew rate, very low THD, and 66dB adjustment range in 1dB steps to maximize dynamic range. An integrated gigabit Ethernet switch allows for easy networking. Users also benefit from the option of combining Tactus.Stage I/O interfaces for a total of 64 stereo inputs by 32 stereo outputs.

Tactus™.Stage



Tactus™.FOH

Tactus™.FOH SKU-03616330

The Tactus.FOH is powered by the Waves SoundGrid audio processing/networking platform, ensuring extremely low latency with precision audio processing. When combined with the new Waves LV1 eMotion Mixer for SoundGrid, the products result in a mixing platform that is unsurpassed in the industry with regard to features, audio quality, and flexibility. The Tactus.FOH frame provides 8 local microphone/line inputs and 8 line outputs in addition to 2 AES outputs and serves as the audio signal processing engine.

Tactus™.FOH — Front



- Primary server for the Tactus Digital Mixing System, hosting and supporting the eMotion LV1 software mixing platform
- The Tactus.FOH will function as a standalone core for an 8 in, 8 out mixing platform
- 8 balanced microphone/line inputs, XLR, TRS and 1/4" phono
- 8 balanced outputs: first 4 are male XLR connectors, 2 of which have parallel TRS jacks, plus 4 additional TRS jacks
- 48-volt phantom power switchable on every microphone input
- High performance digitally controlled microphone preamps
- Two AES digital inputs
- Integral gigabit Ethernet switch for easy networking
- Waves® SoundGrid™ digital audio network protocol
- Supports sample rates of 44.1 kHz, 88.2 kHz and 96 kHz
- External word clock input and output;
- Headphone output with level control
- MIDI in and switchable out or thru

Tactus™.Control

Tactus™.Control SKU-03615110

The Tactus™.Control is designed to supplement the LV1 eMotion touch screen by providing moving faders, lighted buttons and knobs for the most used functions. It has 16 motorized channel faders, with Mute Cue and Select buttons along with a multi line scribble strip display. These can follow screen layer selections or be locked on a layer for expanded control. There are two Master faders that can be mapped to any input or master fader in the console. A single control knob follows on screen parameter selection for quick and easy adjustment. It also has 8 Mute group buttons, 8 User buttons with label screens, 4 plugin control knobs, scene, and layer control buttons, cue level and clear. The Tactus.Control connects via USB.

Tactus™.Control



WAVES LV1 eMotion software

The Crest Tactus hardware and Waves LV1 eMotion software combine to create a high-quality, flexible live-sound, mix system. The system's modular approach provides unprecedented scalability to meet a wide variety of mixing applications from small corporate to houses of worship and music concerts. The components for I/O, DAWs, processing, touch screens and tactile controllers, can be added as required to meet the needs of your application. All of the processing within the Waves LV1 eMotion software is based on plugins for easy channel and output processing customization.

The Waves LV1 eMotion mixer application runs on a Windows® PC or Mac® with one, two or three multi-touch screens. Additionally one or two Tactus.Control motorized faders hardware surfaces can also be added for tactile control if desired.



eMOTION/LV1

Tactus™ DIGITAL MIXING SYSTEM

DIGITAL MIXERS

XD™ Series

XD™ 16 | XD™ 28 | XD™ 4-channel Analog Input Expansion Module | XD™ 4-channel Dante® Network Expansion Module

The new XD series Digital Mixers from Crest Audio introduce a new concept in small format mixers and a new standard for expandability and capability. Available in two sizes - 16 and 28 channel, multiple XD frames can be interconnected to expand the channel count. An integrated module bay allows the addition of Dante® networking. The built-in WiFi access point and router provides wireless control of the mixer from an Apple iPad. The wide range of configurations allow the user to use XD as a simple front of house mixer, a monitor mixer, a personal monitor mixer or a combination of functions depending on the system requirements. The XD digital mixers also allow users to record the output of the stereo mix to a connected USB drive. Expandable, configurable, flexible - all in one convenient, efficient package.

XD™-16

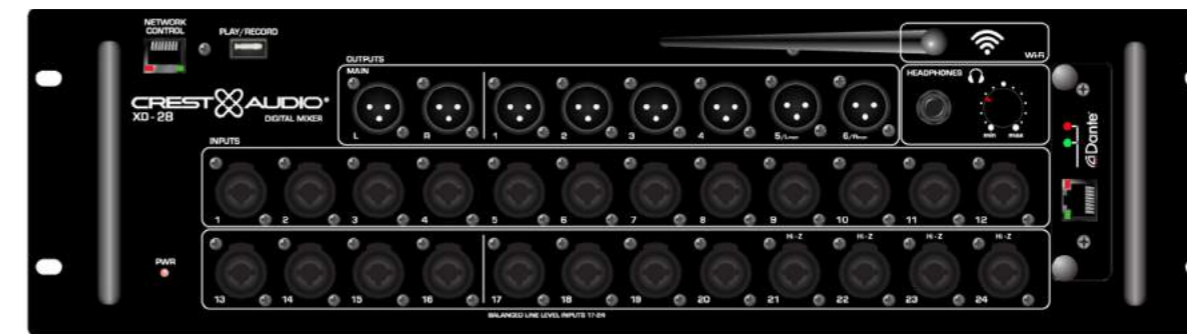
- 16 Channels (8 combination jacks+ 4 line in)
- 4 analog via expansion card)
- 8 Silencer™ mic preamps
- 4 XLR Aux/Mon outputs - 2 XLR main outputs
- USB 2-track recording and playback
- iOS Mac remote app control
- Optional DANTE® expansion card
- Expandable via unit linking
- 4 DCAs
- Midmorph™ EQ
- 4 internal FX
- Real Analyzer (RTA)
- Built-in Wi-fi router



XD™-16 — Front

XD™-28

XD™-28 — Front



XD iOS Software



XD PC Utility software



- 24 Channels (combination jacks)
- 4 analog via expansion card)
- 24 Silencer™ mic preamps
- 6 XLR Aux/Mon outputs - 2 XLR main outputs
- USB 2-track recording and playback
- iOS Mac remote app control
- Optional DANTE® expansion card
- Expandable via unit linking
- 4 DCAs
- Mid-morph EQ™
- 4 internal FX
- Real Analyzer (RTA)
- Built-in Wi-fi router

PROFESSIONAL POWERED LINE ARRAY SPEAKER SYSTEM

Versarray® Pro Series

Versarray® 112 Pro | Versarray® 215 Pro Sub | Versarray® 218 Pro Sub

Features for all Versarray® Pro Series

- Hammerhead polyurea black finish and black powder-coated cloth lined grilles
- Inputs are analog XLR in and/or Dante® Ethernet audio network in.
- Full complement of DSP based limiting and compression to protect the drivers from overdrive conditions
- Analog Output Thru connector is a male XLR

Versarray® 112 Pro & Versarray® 215 Pro flown using Versarray® MK III Halo



Versarray® 112 Pro & Versarray® 215 Pro flown using Versarray® MK III Halo & Versarray® MK III Fly Bar, 6 ft Length



Picture shows angle adjuster in 2 1/2 degree increments, from 0 to 15 degrees total angle between adjacent cabinets



Versarray® 112 Pro

The Versarray® Pro 112 Powered Ribbon Tweeter Line Source Array speaker system consists of a 12" Neo Black Widow® woofer combined with a Neodymium based Peavey RD™ 2.6 ribbon tweeter in a cabinet with a simple, quick, yet flexible rigging system. Designed to provide modular coverage of small to medium venues, and intended for use with the companion Versarray® Pro Sub models, the Versarray® Pro 112 offers excellent versatility with a very high performance capability. The two-way system consists of the following driver components: a 12" Black Widow® Neo series woofer with Neodymium magnet structure. Capable of over 500W of continuous power handling (AES Std 2-1984), the woofer can handle a lot of sheer power. The high frequencies are handled by two Peavey RD™ 2.6 ribbon tweeters utilizing a composite sandwich ribbon, a Neodymium magnet system, and a low distortion waveguide.

Power for bi-amping is supplied by some very efficient power amplifier systems, controlled by a sophisticated and refined DSP operations system with Dante® connection capability. Total system power is 3400W total peak power, with 2000W peak power for the woofer, and 1400W total peak power for the two ribbon tweeters. This sheer power is controlled precisely and processed by a high performance DSP system, which provides all the crossover and EQ functions, as well as providing all limiting, compression and driver protection duties with unfailing attention to every detail of the music.

A unique set of control buttons on the rear panel allow analog signal input and use without the need for a network controller, by setting the system for typical use situations via push-button. This feature allows the use of the system without the requirement for a full-blown digital networking controller or system.

The adjustable rigging system provides for a classic straight line-array configuration, or a number of different angling options, providing easy aiming of the system. Angles between the array modules is adjustable from 0 degrees (straight), to 7.5 degrees in 2.5 degree increments. Total angle possible between two cabinets is 15 degrees.

Quick-lock pins are supplied with the rigging hardware to couple the Versarray® Pro 112 modules together and lock the angles between them into place, as well as for the rigging halo and fly bar configurations of a line array. The flexibility of the Versarray system allows the use of anywhere from 1 to 10 Versarray® Pro 112 modules in conjunction with anything from one Versarray 118 Pro Sub to as many Versarray 218 or 215 Pro Subs as you can! An optional special groundstack bracket set mounts to the Versarray 218 Pro Sub, and allows up to three of the Versarray® Pro 112's to be mounted on top of the Versarray 218 Pro Sub, and angled upward, for use on stage in a stadium seating situation.

Versarray® 112 Pro — Front



Versarray® 112 Pro — Back

Black Widow®



- 2-way Bi-Amp Ribbon Line Source Array SR System
- 3400 Total Peak watts of system power
- 12" Neo Black Widow® 4" VC Woofer
- Peavey Exclusive RD2.6 Ribbon Tweeters with Neo magnet and composite material sandwich ribbon
- Fan cooled for maximum reliability
- 90 H by 15 V degree coverage pattern (per one cabinet)
- Easy aiming FlyQWIK™ hardware rigging system
- Angle adjustable in 2 1/2 degree increments, from 0 to 15 degrees total angle between adjacent cabinets
- Analog signal input use without the need for a digital network controller, via the use of rear panel push-button set-up.
- 18 mm 13 ply Baltic Birch enclosure with steel inner brackets
- Injection molded cabinet end caps, made from high impact material.

Features for both Versarray® Pro Series Subs

- Dual Woofer Subwoofer SR System
- 3000 Total Peak watts of system power

- Peavey's UniVent™ air pumping venting system
- 18 mm 13 ply Baltic Birch enclosure
- PowerCON Input and Thru AC power connections

Versarray® 215 Pro

The Versarray® Pro 215 Sub Powered Subwoofer speaker system consists of a pair of 15" Low Rider® woofers combined with a super-solid cabinet with a simple, quick, yet flexible rigging system. Designed to provide modular coverage of small to medium venues, and intended for use with the companion Versarray® Pro 112 models, the Versarray® Pro 215 Sub offers excellent versatility with a very high performance capability. The subwoofer system consists of the following woofer components: a pair of 15" Low Rider® series woofers with a very long throw 4" voice coil structure. Capable of over 800W of continuous power handling (AES Std 2-1984), these woofers can project a lot of low frequency energy.

The Versarray® Pro 215 Sub incorporates Peavey's UniVent air pumping venting system. The UniVent venting system literally pumps air through the enclosure, exchanging the stale hot air inside the cabinet for the cooler outside air. This helps keep the woofer operating temperatures from getting so high, and increases reliability and reduces power compression under heavy continuous drive conditions. The air pumping action is achieved without excessive turbulence or any significant net asymmetry of total vent air flow.

Power for both woofers is supplied by some very efficient power amplifier systems, controlled by a sophisticated and refined DSP operations system with Dante® connection capability. Total system power is 3000W total peak power, with 1500W total sine wave power for the woofers. This sheer power is controlled precisely and processed by a high performance DSP system, which provides all the crossover and EQ functions, as well as providing all limiting, compression and driver protection duties with unflinching attention to every detail of the music.

- 15" Low Rider® 4" VC Woofer
- Fan cooled for maximum reliability
- Easy FlyQWIK™ hardware rigging system

The adjustable rigging system provides for hanging multiple Versarray® Pro 112 cabinets below a single Sub, or multiple Subs. Quick-lock pins are supplied with the rigging hardware to couple the Versarray® Pro 215 Subs together, and to the rigging Halo and Frames. The flexibility of the Versarray® FlyQWIK™ system allows the use of anywhere from 1 to 5 Versarray® Pro 215 Subs in conjunction with an appropriate number of Versarray® Pro 112 cabinets.

An optional special Sub Support Frame rigging adaptor mounts to the Versarray® 215 Pro Sub, and allows Versarray® Pro 112's to be flown below the Sub, with the Sub being flown from a Versarray® Halo. See Crest Audio® Model Versarray® Mk3 Halo Spec Sheet for details of the allowable mix of Versarray® Subs to 2-ways.



Versarray® 218 Pro

The Versarray® Pro 218 Sub Powered Subwoofer speaker system consists of a pair of 18" Low Rider® woofers combined with a super-solid cabinet with a simple, quick, yet flexible rigging system. Designed to provide modular coverage of small to medium venues, and intended for use with the companion Versarray® Pro 112 models, the Versarray® Pro 218 Sub offers excellent versatility with a very high performance capability. The subwoofer system consists of the following woofer components: a pair of 18" Low Rider® series woofers with a very long throw 4" voice coil structure. Capable of over 800W of continuous power handling (AES Std 2-1984) each, these woofers can project a lot of low frequency energy.

The Versarray® Pro 218 Sub incorporates Peavey's UniVent™ air pumping venting system. The UniVent™ venting system literally pumps air through the enclosure, exchanging the stale hot air inside the cabinet for the cooler outside air. This helps keep the woofer operating temperatures from getting so high, and increases reliability and reduces power compression under heavy continuous drive conditions. The air pumping action is achieved without excessive turbulence or any significant net asymmetry of total vent air flow.

Power for both woofers is supplied by some very efficient power amplifier systems, controlled by a sophisticated and refined DSP operations system with Dante® connection capability. Total system power is 3000W total peak power, with 1500W total sine wave power for the woofers. This sheer power is controlled precisely and processed by a high performance DSP system, which provides all the crossover and EQ functions, as well as providing all limiting, compression and driver protection duties with unflinching attention to every detail of the music.

An optional special groundstack bracket set mounts to the Versarray 218 Pro Sub, and allows up to three of the Versarray® Pro 112's to be mounted on top of the Versarray 218 Pro Sub, and angled upward, for use on stage in a stadium seating situation.



- 18" Low Rider® 4" VC Woofer
- Power amp fan cooled for maximum reliability
- Built-In tilt back casters with 4" wheels
- Optional groundstack bracket set allows up to 3 Versarray® 112 Pro 2-Way cabinets to be mounted above the Versarray® Pro 218 Sub

PROFESSIONAL PASSIVE LINE ARRAY SPEAKER SYSTEM

Versarray® MK III Series

Versarray® 112 MK III SKU-03617890 | Versarray® 218 MK III Sub SKU-03617910

Versarray® 112 MK III

Versarray® 112 Mk III Passive Ribbon Tweeter Line Source Array speaker system consists of a 12" Neo Black Widow® woofer combined with a Neodymium based Peavey® RD™ 2.6 ribbon tweeter in a cabinet with a simple, quick, yet flexible rigging system. Designed to provide modular coverage of small to medium venues, and intended for use with the companion Crest Audio Versarray Mk III Sub models, the Versarray 112 Mk III offers excellent versatility with a very high performance capability. The two-way system consists of the following driver components: a 12" Peavey Black Widow Neo series woofer with dual voice coils and a Neodymium magnet structure. Capable of over 500 watts of continuous power handling (AES Std 2-1984), the woofer can handle a lot of sheer power. The high frequencies are handled by two Peavey RD 2.6 ribbon tweeters utilizing a composite sandwich ribbon, a Neodymium magnet system, and a low distortion waveguide.

- 2-way Bi-Amp Ribbon Line Source Array SR System
- One 12" Neo Black Widow® 4" Dual VC Woofer
- Two Ribbon Tweeters with Neo magnet and composite material sandwich ribbon
- Power handling: 500 watts continuous, 1,000 watts program, 2,000 watts peak
- Coverage pattern (HxV): 90° by 15° degree (per one cabinet)
- Easy aiming FlyQWIK™ hardware rigging system
- Angle adjustable in 2.5° increments, from 0° to 15° total angle between adjacent cabinets
- Sound Guard™ tweeter protection
- Inputs are two Neutrik® Speakon® 4 pin jacks in parallel
- 18 mm 13 ply Baltic Birch enclosure with steel inner brackets
- Injection molded cabinet end caps, made from high impact material
- Hammerhead™ polyurea black finish and black powder-coated cloth lined grilles

Designed to be used in conjunction with the Crest Audio ProTour amplifier series with DSP on board for loudspeaker management, the Versarray 112 Mk III can perform to modern standards of excellence, and handily exceed the competitions audible performance.

The FlyQWIK™ fully articulated hardware rigging system provides for a classic straight line-array configuration, or a number of different angling options, providing easy aiming of the system. Angles between the array modules is adjustable from 0 degrees (straight), to 15 degrees in 2.5 degree increments. Total angle possible between two cabinets is 15 degrees.

Versarray® 112 MK III



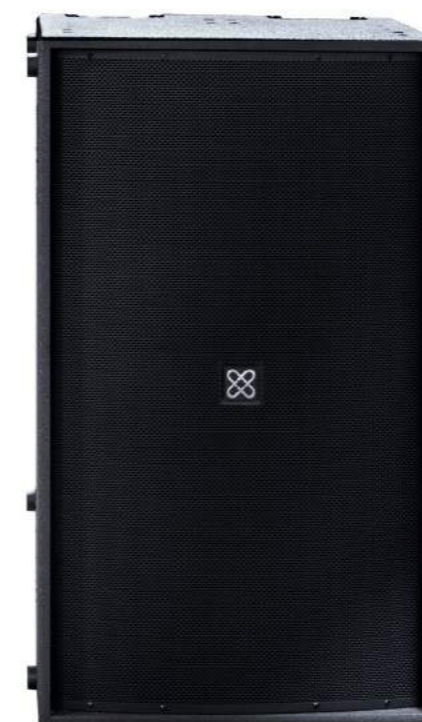
Quick-lock pins are supplied with the rigging hardware to couple the Versarray 112 Mk III modules together and lock the angles between them into place, as well as for the rigging halo and fly bar configurations of a line array. The flexibility of the Versarray system allows the use of anywhere from 1 to 10 Versarray 112 Mk III modules flown in conjunction with the Crest Audio Versarray 218 Mk III Sub on the ground. An optional special groundstack bracket set mounts to the Versarray 218 Mk III Sub, and allows up to three of the Versarray 112 Mk III's to be mounted on top of the Versarray 218 Mk III Sub, and angled upward, for use on stage in a stadium seating situation.

Versarray® 218 MK III Sub

The Crest Audio Versarray 218 Mk III Sub incorporates the ultra-high power Peavey® Lo Max® 18" woofer and a new cabinet design. The Versarray 218 Mk III is a direct radiator vented subwoofer designed specifically for the most demanding Pro-Audio applications.

The Versarray 218 Mk III Sub incorporates Peavey's UniVent™ venting system that literally pumps air through the enclosure, exchanging the stale hot air inside the cabinet for the cooler outside air. This helps keep the woofer operating temperatures from getting so high, and increases reliability and reduces power compression under heavy continuous drive conditions. The air pumping action is achieved without excessive turbulence or any significant net asymmetry of total vent air flow. The large vent area and long path length allow for a large volume of air to move with very low resistance.

Versarray® 218 MK III Sub



Designed to be used in conjunction with the Crest Audio ProTour amplifier series with DSP on board for loudspeaker management, the Versarray 218 Mk III Sub can perform to modern standards of excellence, and handily exceed the competitions audible performance.

An optional special groundstack bracket set mounts to the Versarray 218 Mk III Sub, and allows up to three of the Crest Audio Versarray 112 Mk III 's to be mounted on top of the Versarray 218 Mk III Sub, and angled upward, for use on stage in a stadium seating situation.

- Dual Peavey® Lo Max® 18" subwoofers
- Power handling: 2,400 watts continuous, 4,800 watts program
- Full power low frequency response down to 34 Hz!
- UniVent™ vented cooling system
- Neutrik® Speakon® professional input connectors, 4- and 8-pin
- Built-In tilt back casters with 4" wheels
- Pairs of heavy-duty steel handles inset on both sides
- 18 mm 13 ply Baltic Birch enclosure with steel inner brackets
- Hammerhead™ polyurea black finish and black powder-coated cloth lined grilles

ProTour™ Amps Series

ProTour™ 8004 | ProTour™ 5002 | ProTour™ 4004

Designed to meet the most demanding requirements of portable and fixed installation audio systems, ProTour Series amplifiers deliver high output power, efficient cooling, on-board DSP, Dante® network connectivity, and USB/Ethernet connectivity for monitoring and control.

All models incorporate a highly efficient switch mode power supply and Class D circuitry with full bandwidth PWM modulators for ultra-low distortion, high efficiency and superior circuit protection. The clip/limiter function provides output monitoring to prevent speaker damage with gentle gain reduction at clip threshold as well as efficient heat dissipation and overheat protection for uncompromised reliability.

In addition to delivering tremendous power, ProTour Series amplifiers are also capable and sophisticated loudspeaker processors thanks to a powerful internal DSP engine with Everything you need to optimize a loudspeaker system is at your fingertips.

Users can set parameters, select input source and load presets via the convenient front panel LCD touchscreen. A Dante option enables primary and redundant connectivity to a digital audio network and allows external control and monitoring of the amplifier.

ProTour™ 5002 - Front



ProTour™ 5002 - Back



- Crossover filters
- RMS compressor
- Parametric EQ
- Alignment delays
- White/pink noise
- Advanced FIR Technology

Model	ProTour 8004d	ProTour 5002d	ProTour 4004d
Channel	4	2	4
8 ohm power (watts per channel)	1000	1550	n/a
4 ohm power (watts per channel)	2000	2000	1000
100V line	No	No	No
70V line	Yes	No	Yes
Built in DSP	Yes	Yes	Yes
Dante	Yes (opt)	Yes (opt)	Yes (opt)

Pro-LITE™ Series

Pro-LITE™ 7.5 SKU-03602222 | Pro-LITE™ 5.0 SKU-03602162 | Pro-LITE™ 3.0 SKU-03601272 | Pro-LITE™ 2.0 SKU-03600902

100% Crest Audio® - 75% Lighter; The leader in dependable power amplification is now lighter than ever. With heavy-duty mission-critical components like extra-large capacitors and inductors that optimize 2-Ohm operation, the Pro-LITE Series delivers Crest Audio's legendary strength while offering incredible weight savings.

Starting with an efficient design and built on the solid, three-decade legacy of Crest Audio amplifiers, the Pro-LITE™ Series power amplifiers provide high power and rock solid performance in an ultra-efficient lightweight package for all professional audio applications.

The Pro-LITE Series amplifiers are a two rack unit (2RU) space designed with an advanced, high-speed class D design with a switch-mode power supply that reduces weight while increasing reliability, thermal efficiency and output power in parallel, stereo and bridged modes.

- Automatic Clip Limiting (ACL™) protection
- Revolutionary Pro-LITE class D topology
- Detented input controls
- Combination XLR 1/4" inputs connectors
- 1/4" pole twist lock output connectors
- Individual signal pass-thru 1/4" jacks on each channel

Pro-LITE™ 7.5 - Front



Pro-LITE™ 7.5 - Back



Pro-LITE™ 2.0 - Front



Pro-LITE™ 3.0 - Front



Pro-LITE™ 5.0 - Front



PROFESSIONAL TOURING AMPLIFIERS

Pro-200™ Series

Pro™ 9200 SKU-03000562 | Pro™ 8200 SKU-03000592 | Pro™ 7200 SKU-03000582 | Pro™ 5200 SKU-03000652

Famous for superior sonic performance, reliable operation and long service life, the Professional Series firmly established Crest Audio® in the world of professional touring sound reinforcement amplification.

The Crest Audio Pro 200 Series extends that tradition with lightweight, cost-effective amplifiers designed for touring, fixed sound reinforcement and advanced audio/visual systems. Advances in design, technology and manufacturing, combined with new features and a lightweight rugged chassis, make the Pro 200 Series the perfect choice in high-performance power amplifiers.

High-speed, wide-bandwidth output devices; Dual, variable-speed fans; Balanced Neutrik® Combi inputs; Speakon® and 5-way binding post speaker outputs; Mode selector switch for stereo, parallel & bridged mono operation; Input sensitivity selection; Recessed, stepped attenuators; Front-panel circuit breaker switch combination; Tour Class® Protection.

Designed by Crest Audio engineers in the USA, and manufactured with internal components selected for premium quality and proven durability. Each modular sub-assembly is pre-tested, and the assembled Pro 9200 receives a rigorous “hot room” burn-in before thorough final checkout on precision test equipment.

Pro™ 9200 - Front



Pro™ 9200 - Back



Pro™ 5200 - Front



Pro™ 7200 - Front



Pro™ 8200 - Front



Designed with touring sound professionals in mind, the Crest Audio Pro 200 Series power amplifiers faithfully produce audio at high power with low distortion in a lightweight, economical package.

- Dramatically reduced net weight
- Latest generation of high speed, wide-bandwidth output devices
- Dual, variable speed fans
- Balanced XLR inputs
- Speakon® and 5-way binding post speaker outputs
- Mode selector switch for stereo, parallel and bridged-mono operation
- Input sensitivity selection
- Recessed, stepped attenuators
- TourClass® Protection Circuits:
 - ACL™ (Active Clip Limiting) prevents speaker damage by providing gentle gain reduction when the signal approaches the clipping threshold
 - IGM™ (Instantaneous Gain Modulation) monitors speaker loads to detect conditions that may overstress output devices. This allows safe operation into nominal 2Ω speaker loads
 - AUTORAMP™ gradually increases gain to the attenuator level settings when the amplifier is turned on. This prevents abrupt turn-on level
- Other protection features include: short circuit, DC voltage, comprehensive thermal management and current in-rush turn-on/ off; transient sub-sonic input

	Pro™ 9200	Pro™ 8200	Pro™ 7200	Pro™ 5200
Stereo Power				
8Ω Stereo	1,300 W	825 W	590 W	290 W
4Ω Stereo	2,200 W	1,450 W	1,000 W	525 W
2Ω Stereo	3,250 W	2,250 W	1,650 W	850 W
Bridged Mono				
8Ω Mono	4,400 W	2,900 W	2,000 W	1,050 W
4Ω Mono	6,500 W	4,500 W	3,300 W	1,700 W
Output Voltage RMS	113 V	90 V	75 V	52 V

HIGH EFFICIENCY TOURING AMPLIFIERS

CC™ Series

CC™ 5500 SKU-03513852 | CC™ 4000 SKU-01000752 | CC™ 2800 SKU-01000712 | CC™ 1800 SKU-01000812

Crest Audio CC Series amplifiers are designed to achieve unsurpassed sonic performance and long-term reliability under extreme stress in touring or fixed installation applications. Absolute sonic accuracy is the hallmark of every Crest amplifier. Bass is solid and defined to the limits of audibility with ample current reserves. Wide-bandwidth output devices ensure detailed, transparent high frequency response. Thanks to the Crest Audio exclusive IGM™ circuit, the CC Series will drive 2Ω loads safely without compromising performance.

CC™ 5500 - Front



CC™ 5500 - Back



CC™ 1800 - Back



CC™ 2800 - Back



CC™ 4000 - Back



	CC™ 5500	CC™ 4000	CC™ 2800	CC™ 1800
Stereo Power				
8Ω Stereo	1,150 W	800 W	595 W	450 W
4Ω Stereo	1,800 W	1,350 W	965 W	700 W
2Ω Stereo	2,750 W	2,000 W	1,400 W	900 W
Bridged Mono				
4Ω Mono	5,500 W	2,900 W	2,000 W	1,050 W
Output Voltage RMS	115 V	93 V	82 V	73 V

8Ω, 4Ω Stereo Power ratings @ 1kHz, <0.05% THD+N both channels driven
2Ω Stereo and 4Ω Bridged Mono Power rating @1kHz, <0.1% THD+N

- Toroidal power transformer
- Dual, variable speed fans
- Balanced XLR inputs
- Speakon® and 5-way binding post speaker outputs
- Mode selector switch for stereo, parallel and bridged-mono operation
- Input sensitivity selection
- Recessed, stepped attenuators
- Front panel circuit-breaker switch
- TourClass® Protection Circuits:
 - ACL™ (Active Clip Limiting) prevents speaker damage by providing gentle gain reduction when the signal approaches the clipping threshold
 - IGM™ (Instantaneous Gain Modulation) monitors speaker loads to detect conditions that may overstress output devices. This allows safe operation into nominal 2Ω speaker loads
 - AUTORAMP™ gradually increases gain to the attenuator level settings when the amplifier is turned on. This prevents abrupt turn-on level
 - Other protection features include: short circuit, DC voltage, comprehensive thermal management and current in-rush turn-on/ off; transient sub-sonic input

NETWORKED COMMERCIAL & INDUSTRIAL AMPLIFICATION (MULTI CHANNEL)

CKd™ Series

CKd™ 1208 SKU-03602352 | CKd™ 1204 SKU-03611432 | CKd™ 608 SKU-03611442 | CKd™ 604 SKU-03611452

The CKd™ Series of intelligent networkable hi-power amplifiers offer four multi-channel models to meet the needs of demanding audio installations. The CKd 1208 and CKd 1204 provide 1,250 watts per channel in eight and four channels, respectively, while the CKd 608 and CKd 604 provide 625 watts per channel in eight and four channels. Each amplifier channel will operate to rated power in direct 70-volt, 100-volt, 8-ohm or 4-ohm modes, configurable per channel.

CKd Series amplifiers are networkable via Crest Audio NexSys® Nx Dante® -8 or Nx CobraNet® -8 interface modules that fit into the rear bay of CKd power amplifiers. Configuration, control and monitoring of the CKd power amplifiers is supported by the MediaMatrix® nWare™ software program and control suite.

A Control Voltage (CV) input is included on each channel to allow external gain control, while a Fault output on each channel allows the CKd power amps to be wired to other monitoring systems. In addition, users can conserve energy by disabling channels that are not in use.

The CKd Series amplifiers includes Crest Audio's exclusive ACL™ (Active Clip Limiting), which automatically reduces gain at the onset of clipping to prevent amplifier and loudspeaker damage, and IGM™ (Instantaneous Gain Modulation), which monitors load current to protect against overloading.

Decades of proven performance, reliability and intelligence converge in the Crest Audio® CKd™ Series, combining the legendary overbuilt power supply design made famous by the Crest Audio Pro 200™ with networking functionality and an ultra-lightweight class D topology. The design centers around an ultra-high efficiency amplifier output circuit which reduces weight while increasing output power, reliability and thermal efficiency.

CKd™ 1208 — Front



CKd™ 1208 — Back



CKd™ 1208



CKd™ 1204



CKd™ 608



CKd™ 604



- Ultra-lightweight class D topology
- CKd-1208 and CKd-1204 provide 1,250 watts per channel in eight and four channels respectively
- CKd-608 and CKd-604 provide 625 watts per channel in eight and four channels respectively
- Ultra-lightweight class D topology
- Each amplifier channel will operate to rated power in direct 70-volt, 100-volt, 8-ohm or 4-ohm modes, configurable per channel
- Networkable through Crest Audio® NexSys Nx-8 network interface modules
- nWare™ configuration and control software for advanced control and audio routing
- Control Voltage input is included on each channel to allow external gain control
- Fault output on each channel allows CKd power amps to be wired to other monitoring systems
- CKd amplifiers have the option to conserve energy by disabling channels that are not in use
- Crest Audio's exclusive ACL™ (Active Clip Limiting)
- IGM™ (Instantaneous Gain Modulation) to protect against overloading
- STO (Sequential Turn On/Off) for staggered amplifier powering to prevent mains circuit overload

NETWORK AUDIO INTERFACE MODULES

NexSys® Nx-8

Nx Dante®-8 SKU-03612020 | Nx CobraNet®-8 SKU-03000690

Two versions of the NexSys Nx-8 Network Audio Interface modules are available supporting Dante® and CobraNet® streaming audio protocols. Both cards deliver eight (8) channels of streaming audio to Crest Audio networkable power amplifiers. Additionally local analog audio inputs at the amplifier can be routed over the network allowing other network audio devices to receive the audio streams.

Control data and audio are delivered on the same UTP cable. The Nx Dante-8 supports primary and secondary network connections for redundancy purposes. Both network audio interface modules can be configured using the provided 'Edit' - 'Select' - 'Function' plus 'Up' & 'Down' buttons. A red backlit LCD display allows for viewing of configuration plus amplifier health and performance status. The NexSys Nx-8 modules are also supported by the nWare™ configuration and control software suite.

Nx Dante®-8



Nx CobraNet®-8



INDUSTRIAL MULTI CHANNEL POWER AMPLIFIERS

CM™ Series

CM™ 2208 SKU-01000552 | CM™ 2204 SKU-01000542

The CM™ Series amplifiers are at home wherever industrial-strength power is required, from paging systems in venues like airports and schools to house systems in bars, clubs, restaurants, video conferencing systems, hotels, motels, retail stores and more.

The CM™ 2208 amplifier drives 8 independent channels into low impedance or 70 Volt loads. With this advanced amplifier architecture, there is no need to select the load impedance. Each channel can drive 4 Ohms and up for flexible system configuration. Sonics are outstanding, and the price enables use in a multitude of applications. High efficiency allows up to 8 channels in a space-saving 2RU rack height.

A switch allows selection of 0.775 Volt sensitivity or x40 gain. In addition a high-pass filter is selectable per channel. 100 and 50 Volt operation is supported with the Crest Audio CMx accessory.

- Power into 4 Ohm - 150 W x 8
- Power into 8 Ohm - 220 W x 8
- Power @ 70V - 220 W x 8
- Multi-load architecture allows low impedance or 70 Volt operation without select switch (100 or 50 Volt output operation with CMx accessory)
- Compact design allows up to 8 channels in a 2RU rack space
- Low mains current draw
- CM Series Protection Circuits
- ACL™ (Active Clip Limiting) automatically reduces gain at the onset of clipping to prevent amplifier and load damage
- IGM™ (Instantaneous Gain Modulation) monitors load current to protect against overloading
- AUTORAMP™ gradually increases gain when the amplifier is turned on, preventing abrupt turn-on level
- Other protection features include: short circuit, DC voltage, comprehensive thermal management, current in-rush turn on/off transient and sub/ultrasonic input

CM™ 2204 - Front



CM™ 2208 - Front



CM™ 2208 - Back



ULTRA-HIGH EFFICIENT INSTALL POWER AMPLIFIERS

CLh™ Series

CLh™ 6000C SKU-03608422 | CLh™ 3000C SKU-03608362

The Crest Audio CLh™ Series power amplifiers set a new standard for performance and efficiency for the contracting and installation market. CLh amplifiers feature an ultra-high efficiency amplifier output circuit that reduces weight while increasing output power, reliability and thermal efficiency. All models feature low-impedance outputs capable of driving directly 70V or 100V constant voltage speaker lines.

The Crest Audio CLh 6000C and 3000C provide the same high efficiency high power but with 'Power Factor' Correction for world markets where PFC is required. The CLh 6000C and 3000C models operate on 230V/50 Hz power to drive 100V constant voltage systems.

The CLh Series includes Crest Audio's exclusive ACL™ (Active Clip Limiting), which automatically reduces gain at the onset of clipping to prevent amplifier and load damage; over-current protection; DC voltage; channel active and temperature warning. Additional features include a lightweight switch-mode power-supply, remote turn-on, sequential turn-on, and a switchable, built-in low-cut filter.

- Ultra-high efficiency, servo-controlled, class-D power amplifiers that deliver high power through two channels
- CLh 6000C produces 3,745 watts per channel at 100 volts
- CLh 5000 produces 2,500 watts per channel continuous at 70.7 volts
- CLh 3000C produces 1,250 watts per channel at 100 volts
- CLh 2500 produces 1,250 watts per channel continuous at 70.7 volts
- Crest Audio's exclusive ACL™ (Active Clip Limiting)
- Over-current protection
- DC voltage output protection
- Channel Active and temperature warning
- Light-weight switch-mode power supply
- Remote turn-on
- Sequential turn-on
- Switchable, built-in low-cut filter

CLh™ 6000C - Front



CLh™ 3000C - Front



CLh™ 6000C - Back



CLh™ 3000C - Back



UA™ 2050

UA™ 2050 SKU-03616290

The Crest Audio® UA™-2050 utility amplifier provides installers and contractors a cost effective, efficient and inconspicuous solution for background music and paging applications. The UA-2050's small form factor is perfect for mounting under the counters, on the closet walls or on the shelves of retail spaces, restaurants and offices. Despite its convenient size, the UA-2050's features, versatility and power are ideal for any application where background music and paging are required.

The UA-2050 combines a pair of inputs with an efficient Class D 50-watt mono power amplifier capable of driving a direct low-impedance output or 70V or 100V constant voltage output. The amplifier features bass and treble controls to allow equalization for any installation location.

The UA-2050's two inputs provide simple and trouble-free configuration for quick installation and easy operation. Input 1 is a balanced microphone or line input via screw terminal barrier strip connectors. Input 2 is a line level input via dual RCA connectors or unbalanced screw terminals. The level sensing on Input 1 mutes Input 2 whenever a microphone signal exceeds the adjustable level threshold. The level sensing function can also be defeated to prevent muting of Input 2.

The UA-2050 is housed in a conveniently sized steel chassis to allow it to be mounted in any location, and has a voltage selector switch for 120V or 240VAC operation.

UA™ 2050 - Front



UA™ 2050 - Back



- 50 watt Class D mono power amplifier
- 4 Ohm, 70V and 100V outputs
- Small format under-counter, wall or shelf mountable chassis
- Input 1 - balanced with microphone/line switch and screw terminal barrier strip connectors
- Input 2 - line input via dual RCA connectors and unbalanced screw terminals
- Input 1 - Level sensing mutes Input 2, with threshold/ defeat control
- Bass and Treble controls
- Line voltage switch for 120V or 240VAC operation

Utility Installation Series

Rooted in the heritage and legacy of Architectural Acoustics, the all-new Crest Audio Utility Installation Series offers a range of feature rich problem solving products and solutions. From entry level projects that require simple BGM and PTT microphone sources through to fully featured DSP matrixed processors with on-board amplification for mid-market applications such as Houses of Worship or Fitness Centers and everything in between.

IPA™ Series

IPA™ 2300 SKU-03616260

IPA™ 2300

The Crest Audio® IPA™ 2300 utility amplifier provides installers and contractors the simplest and most efficient solution for background music and paging applications. The IPA-2300 is perfect for grocery stores, restaurants, waiting rooms or any retail space where background music with paging is required.

The IPA-2300 combines a pair of inputs with an efficient Class D 300- watt power amplifier capable of driving a direct low-impedance output or a 25V, 70V or 100V constant voltage output.

The IPA-2300's two inputs provide simple and trouble-free configuration for quick installation and easy operation. Input 1 is an electronically balanced microphone or line input via a Euro-style connector. Input 2 is a line level input via dual RCA connectors. The level sensing on Input 1 mutes Input 2 whenever a microphone signal exceeds the adjustable level threshold. The level sensing function can also be defeated to prevent muting of Input 2.

The IPA-2300 is housed in a 2U rack mount chassis and has a voltage selector switch for 120V or 240VAC operation.

- 300 watt Class D power amplifier
- SPS speaker protection system
- High-pass filter to protect speaker transformers from low frequency overload
- Power, signal and SPS indication LEDs
- Input 1 - electronically balanced with mic/line switch and Euro-style connector
- Input 2 - line input via dual RCA connectors
- Input 1 Level sensing mutes Input 2, with threshold/defeat control
- Input level controls
- 4 Ohm, 25V, 70V and 100V outputs.
- 2U rack-mount chassis
- Line voltage switch for 120v or 240v AC operation

IPA™ 2300 — Front



IPA™ 2300 — Back



UMA™ 4300

UMA™-4300 SKU-03616030

The Crest Audio® UMA™ 4300 Mixer Amplifier provides installers and contractors a simple and efficient solution for a broad range of sound reinforcement, paging and background music applications in retail spaces, restaurants, lounges and waiting rooms.

The Crest Audio UMA-4300 Mixer Amplifier combines a four input mixer with a highly efficient Class D 300-Watt mono amplifier. Each of the four inputs can handle a variety of input signals, including microphone, balanced line level and mono or stereo unbalanced line sources. The UMA-4300 provides a simple paging solution with priority mute level sensing controls on input 1. Inputs 1 and 2 are electronically balanced and provide microphone preamp gain controls with switched 48V phantom power for microphones. Inputs 3 and 4 support balanced and unbalanced line inputs with switch selectable Euro-style connectors or dual RCA inputs.

The UMA-4300 Mixer Amplifier can drive a low impedance loudspeaker with its 4-ohm direct output or a 25V, 70V or 100V constant voltage loudspeaker circuit.

The UMA-4300 is housed in a 2U rack mount chassis and has a voltage selector switch for 120V or 240VAC operation.

UMA™ 4300 — Front



UMA™ 4300 — Back



- 300 watt Class D power amplifier
- SPS speaker protection system
- High-pass filter to protect speaker transformers from low frequency overload
- 2U rack-mount chassis
- Power, signal and SPS indication LEDs
- Input 1 - electronically balanced with microphone/line switch and Euro-style connector
- Input 2 – line input via dual RCA connectors
- Input 1 Level sensing mutes Input 2, with threshold/defeat control
- Input level controls
- 4 Ohm, 25V, 70V and 100V outputs.
- Bass and Treble controls
- Line voltage switch for 120V or 240VAC operation

WALL MOUNT MIXER AMPLIFIERS

WMA™ 4300

WMA™ 4300 SKU-03616660

The Crest Audio® WMA™-4300 wall mount amplifier provides a unique, simple and complete solution to designers, contractors and installers who wish to place a full-featured audio mixing and amplification system in a convenient and secure location. The WMA-4300 provides a feature-packed and re-engineered mixer mated to a Class D power amplifier with higher power and efficiency. The simple and straightforward front-panel controls, inputs and output terminals can be concealed and secured behind the optional steel back box for tamper-proof and worry-free operation. The WMA-4300 is also designed to be backward compatible with Peavey Commercial Audio's legacy wall-mount amplifier back box for ease and convenience in replacing earlier products with a more efficient Class D amplifier platform.

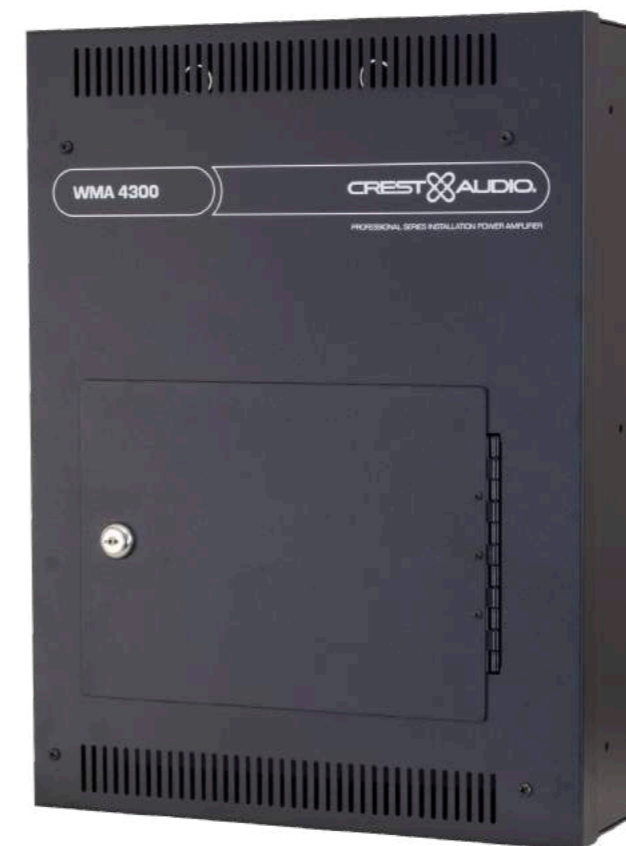
The WMA-4300 combines a four-input mixer with a highly efficient Class D 300-watt mono amplifier. Each of the four inputs can handle a variety of input signals, including microphone, balanced line level and mono or stereo unbalanced line sources. The WMA-4300 provides a simple paging solution with priority mute level sensing controls on input 1. Inputs 1 and 2 are electronically balanced and provide microphone preamp gain controls and switched 48V phantom power for microphones. Inputs 3 and 4 support balanced and unbalanced line inputs with switch selectable Euro-style connectors or dual RCA inputs.

- 300 watt Class D power amplifier
- SPS speaker protection system
- High-pass filter to protect speaker transformers from low frequency overload
- Dedicated vertical chassis designed for wall or flush mounting with accessory back box. Mates to legacy Peavey Commercial Audio wall-mount amplifier back box
- Four input level controls with signal/clip/mute LEDs
- Power, Signal and SPS speaker protection system indication LEDs
- Master volume
- Four electronically balanced Mic/Line inputs
- Inputs 1 and 2 are electronically balanced with Euro connectors and preamp gain control
- Inputs 1 and 2 have phantom power with switch
- Inputs 3 and 4 have switch to select balanced Euro connector or dual RCA connectors
- Inputs 3 and 4 have rear panel preamp gain controls
- Input 1 Level sensing muting of inputs 2-4 with threshold/defeat control
- Balanced output with Level control.
- Switchable Mix output or Input 4 Direct output.
- Output is not affected by mute or channel level if channel 4 is selected
- Preamp output, power amp input for inserting processing with Bypass switch
- Bass and Treble controls
- 4 Ohm, 25V, 70V or 100V outputs
- Line voltage switch for 120V or 240VAC operation

The WMA-4300 wall mount amplifier can drive a low impedance loudspeaker with its 4-ohm direct output or a 25V, 70V or 100V constant voltage loudspeaker circuit. Bass and treble controls are provided to allow equalization of the output signal in any installation environment.

The WMA-4300 is housed in a dedicated vertical mount chassis that may be surface or flush mounted when mated with its back box. The back box may be roughed-in or installed during construction and the WMA-4300 installed once construction is finished. The WMA-4300 has a voltage selector switch for 120V or 240VAC operation.

WMA™ 4300 — Front with door closed



WMA™ 4300 — Front with door open





Every Link in the Chain

Peavey Commercial Audio provides the system designer and integrator an entire range of products, from the microphone to the loudspeaker, and every link in the signal chain in between.

Regardless of the size of the installation, Peavey Commercial Audio offers clever and affordable solutions at every level.

Peavey Commercial Audio features an extensive variety of microphones, from dynamic vocal mics to special application microphones for fixed installations to measurement mics.

The Escort® and Messenger® portable public address systems allow users to take Peavey quality anywhere, any time.

Our Digitool® fixed architecture Digital Signal Processors can be found in small to mid-sized installations around the world. Easy to install and easy to program via an external graphical user interface, the Digitool is the most cost-effective way to provide sound-shaping, routing and control capabilities to any installation.

Peavey Commercial Audio offers an entire range of loudspeaker solutions, from the Versarray® Series line array systems to the Elements™ Series weatherproof loudspeakers to the PHR™ Series ceiling speakers, to outfit any size installation and fulfill any purpose.

Best of all, designers and integrators can specify Peavey Commercial Audio products with every confidence knowing that over 50 years of experience, over 130 patents and the knowledge and expertise of our global support staff stand behind every product we manufacture.

Legoland Japan - Tokyo



AUDIO PROCESSORS

Digitool® Series

Digitool® MX32a SKU-03601442 | **Digitool® MX16a** SKU-03601332

The Digitool® MX16a, MX32a are a family of digital audio processing units built on the rich history of the original Digitool MX and designed for the audio professional. Each Digitool has the power and flexibility to perform loudspeaker management functions in addition to matrix mixing, room combining and other audio processing functions for installed and portable sound systems. Each model features a full-color display screen, front navigation and editing controls, front panel input and output mute buttons and LED meters to simplify configuration. Digitools can also be configured using a Windows application via USB.

- Full-color, graphic LCD for easy front panel control
- Windows GUI for setup and control
- 8 mic/line inputs and 8 line outputs (MX16a and LIVE)
- 16 mic/line inputs and 16 line outputs (MX32a)
- 48V phantom power switchable on each input
- 5-segment LED meters on inputs and outputs
- Front panel input and output mute buttons
- Software assignable Stereo AES input MX16a and LIVE (2 stereo AES inputs on the MX32a)
- 8 CV “control voltage” inputs that can be programmed as level and mute controls
- RS-485 input for external control of level, mute and preset recall (Supports up to 16 D Series programmable wall mount controls per connections)
- Front-panel USB “B” port for setup
- Rear-panel Ethernet port for 3rd party control
- Euro terminal block termination on MX16a, MX32a
- XLR input and output connectors on Digitool LIVE
- Rear-panel ears and strap for easy cable management
- Firmware can be field updated
- 100V to 240VAC 50/60 Hz power inlet

Digitool® MX16a — Front



Digitool® MX16a — Back



Digitool® MX32a — Front



Digitool® MX32a — Back



neets

Now compatible with
Neets TanGo AV control system

Digitool® HD GUI PROCESSING FUNCTIONS:

- Full matrix routing with mute and level control at each cross-point
- Input and output filters including: PEQ, hi-shelf, lo-shelf, hi-pass, all-pass and horn-EQ
- Crossover filters to fourth order, including Butterworth, Bessel and Linkwitz-Riley alignments
- Delay of up to 2.5 seconds on each input and output with sample period resolution
- Gate and compressor on every input
- Compressor/limiter on every output
- Digitally controlled analog input and output level controls for maximum dynamic range
- 4 audio-triggered, priority mute buses
- Automix capability
- Signal generator
- Copy/Paste of input and output settings
- Preset storage and recall (8 internal preset locations)
- Assignment of D Series programmable wall controls

WALL PANELS

D Series Wall Panels

Digitool® DIV SKU-00510410 | **Digitool® D4s** SKU-00510400 | **GPIO-25 Breakout Panel** SKU-00510490

The D Series Decora® wall panels can remotely control various functions such as select a music source or simply adjust the volume of a channel/zone or recall any memory preset of audio and control processor frames. The D Series programmable wall panels are compatible with any of the NION® Series digital signal control processors supporting up to 31 of any combination of panels on the same RS-485 serial network. Additionally, up to any 16 panels per RS-485 serial network, are supported by the Digitool® MX16, MX32 audio processors.



- Supports RS-485 multi-drop network for easy wiring & installation
- Configurable controls via nWare™ or Digitool® HD GUI
- Attractive cosmetic package - standard Decora™ 1G mounting;
- Tracking LED status indication for multiple locations / presets
- Low power requirements

DIV ROTARY ENCODER

- Four (4) zones or source select - user configurable
- Push encoder to select zone / source adjust volume accordingly

D4S BUTTON CONTROL PANEL

- Four (4) trigger buttons for memory preset recall
- Momentary or latch functionality software configured



IP56
RATED



The all-new American-made, incredibly durable, reliable and versatile Elements™ weatherproof enclosures are a combination of innovative cabinet construction and proven, weatherized components designed for direct contact with the elements in the most demanding climates. Gone are the days of hanging so-called enclosures outside only to replace the speaker in a year or two.

Elements™ C Series

Elements™ 108C (IP56) SKU-03609100 | Elements™ 112C 105 X 60RT (IP56) SKU-03608700 | Elements™ 112C 60 X 40RT (IP56) SKU-03608690
 Elements™ 115C 105 X 60RT (IP56) SKU-03608680 | Elements™ 115C 60 X 40RT (IP56) SKU-03608670 | Elements™ 212C Sub (IP56) SKU-03609130

The Elements™ C series of composite enclosures are constructed from an advanced composite material that is dimensionally stable in wet conditions and resists contamination, yet has the resonant properties of wood. This light and durable material ensures unmatched sonic performance while providing reliable service year after year. The aluminum grills of the Elements C series enclosures feature a barrier membrane that repels water yet allows moisture to escape without affecting the sonic performance of the loudspeaker.

The IP56 rated Elements C series speakers are available in three two-way, full range configurations and as a flyable subwoofer. The Elements 115C and Elements 112C feature 15" and 12" weatherproof Black Widow® woofers and an RX™22 2" titanium diaphragm compression driver tweeter coupled to a Quadratic-Throat Waveguide® rotatable horn. The Elements 115C and Elements 112C can each be ordered with either a 60° X 40° or a 105° X 60° horn. The Elements 108C combines a 75° X 75° horn with an 8" weatherproof woofer in a compact and durable enclosure.

The Elements 212C SUB is a flyable subwoofer enclosure featuring a pair of 12" weatherproof woofers.



	Elements™ 108C	Elements™ 112C	Elements™ 115C	Elements™ 212C Sub
Power Handling — Continuous	200 watts	500 watts	500 watts	1,000 watts
Power Handling — Program	400 watts	1,000 watts	1,000 watts	2,000 watts
Power Handling — Peak	800 watts	2,000 watts	2,000 watts	4,000 watts
Impedance	Nominal: 8.0 ohms Minimum: 6.3 ohms	Nominal: 8.0 ohms Minimum: 5.8 ohms	Nominal: 8.0 ohms Minimum: 5.8 ohms	NA NA
SPL @1w,1m	91 dB SPL, (2.83 V input)	95 dB SPL, (2.83 V input)	96 dB SPL, (2.83 V input)	98 dB SPL, (2.00 V input)
Max SPL @1m	114 dB SPL continuous 120 dB SPL peak	122 dB SPL continuous 128 dB SPL peak	123 dB SPL continuous 129 dB SPL peak	128 dB SPL continuous 134 dB SPL peak
Box Tuning Frequency	60 Hz	50 Hz	45 Hz	59 Hz
Electroacoustic Crossover Point	2.0 kHz at 12 dB/octave	Elements™ 112C 60X40: Low Frequency - High Frequency: 1.8 kHz at 24dB/octave Elements™ 112C 105X60: Low Frequency - High Frequency: 1.9 kHz at 24dB/octave	Elements™ 115C 60X40: Low Frequency - High Frequency: 1.7 kHz at 24dB/octave Elements™ 115C 105X60: Low Frequency - High Frequency: 1.8 kHz at 24dB/octave	NA NA
Frequency Response	64 Hz - 18 kHz (+/-3dB)	68 Hz - 18 kHz (+/-3dB)	56 Hz - 18 kHz (+/-3dB)	63 Hz - 1.5 kHz (+/-3dB)



The Elements™ Pole Mounting System



70/100v Transformer Option Bay



Weather-Sealed Input Cup Cover With Gland Nut For Speaker Cable Entry

Elements™ CS Series

Elements™ 108Cs (Marine-Grade - IP56) | Elements™ 112Cs 105 X 60RT (Marine-Grade - IP56) | Elements™ 112Cs 60 X 40RT (Marine-Grade - IP56)
Elements™ 115Cs 105 X 60RT (Marine-Grade - IP56) | Elements™ 115Cs 60 X 40RT (Marine-Grade - IP56) | Elements™ 212Cs Sub (Marine-Grade - IP56)

Same base designs as C Series, rated at IP56 with improved;

- Metal components now rated at 316 Stainless steel
- Salt Water Proof
- All Models Available in Black or UV-Protected Marine-Grade White
- Integrated Multi-tap Transformer



POWERED RIBBON LOUDSPEAKER SYSTEM

RBN™ Series

RBN™ 110 SKU-03614752 | **RBN™ 112** SKU-03612692 | **RBN™ 118** SKU-03614722 | **RBN™ 215** SKU-03612722

Ribbon drivers have been used in studio environments for decades, and Peavey developed a way to apply this high-quality sound technology to live applications resulting in a crystal-clear sound that no traditional compression driver can rival. To match the high-frequency performance of Peavey's ribbon driver, the RBN™ 112 and RBN™ 110 are equipped with dual voice coil neodymium Scorpion® speakers, which feature Peavey's exclusive field replaceable basket technology.

Driven by highly efficient, revolutionary power amps designed specifically for powered speaker enclosures, the RBN series consists of the RBN 112 and RBN 110 speaker enclosures and the RBN 215 and RBN 118 powered subwoofers.

To match the incredible high-frequency performance of Peavey's ribbon driver, the RBN 112 and RBN 110 enclosures are equipped with dual-voice coil neodymium Scorpion® speakers which feature Peavey's exclusive field replaceable basket technology.

The RBN 215 and RBN 118 powered subwoofers are at the very forefront of subwoofer technology. Maintaining full output down to 36Hz with 2,000 Watts total peak power and constructed of heavily braced 18mm birch plywood, the RBN subwoofers are designed for years of rock solid low end reliability.



Incorporating modern digital signal processing, the RBN Series features two XLR 1/4" combination inputs, a 3.5mm input, and a microphone/line level selection. Each input features digital infrasonic high-pass filters, a 9-band graphic EQ, and delay. Each output features a sophisticated compressor/limiter and fourth order high-pass/low-pass filters for crossover function and external subwoofer incorporation.

Reliability is key when selecting a powered enclosure. RBN enclosures feature an internal temperature monitor combined with a variable speed cooling fan, plus level and clip indication to ensure optimal performance. Completely user-friendly, the speaker system features internal presets built into the DSP, allowing users to quickly select the speaker's application or orientation via the LCD on the rear of the enclosure.

Combined with Auto-off power down and integrated fly points, the RBN Series is perfect for installations where audio quality, reliability and efficiency are of the utmost importance.

	RBN™ 110	RBN™ 112	RBN™ 118	RBN™ 215
Specifications				
PV True Ribbon Driver	120mm	120mm	N/A	N/A
Woofer	1 x 10"	1 x 12"	1 x 18"	2 x 15"
Peak Power Rating	1,050W	1,50W	2,000W	2,000W
On-Board DSP	Yes	Yes	Yes	Yes
Direct Thru	Yes	Yes	Yes	Yes
Sub-Woofer/Processed - XLR Out	Yes	Yes	N/A	N/A
Hi Pass/Processed - XLR Out	N/A	N/A	Yes	Yes



Proprietary 120mm True Ribbon High Frequency Driver on a low-coloration wave guide. The true ribbon tweeter construction results in a diaphragm moving mass that is about 1/10 that of a typical 2" diameter voice coil compression driver. This provides the excellent transient response and exceptional clarity that the audience hears and appreciates.



12" NEO Scorpion® Loudspeaker Dual push/pull 2.5" voice coils allow greater power handling with lower distortion and deliver overall improved performance over conventional loudspeaker designs. Gold-plated terminals.



Symmetrical Push-pull Neodymium Magnet Structure Outstanding linearity and low even-order distortion performance.
Ram Air Cooling™ Design Radiates heat away from the voice coil and speaker cone.

1,500 Watt Power Amp Competitors claim 1,000 watts while only delivering a fraction of the power. Peavey's exclusive and purpose built power amplifier provides **REAL** rated power for professional sound reinforcement applications.



ADVANCED 96K DSP The ADC and DAC Sampling frequency is 96 kHz, which provides a more accurate and faithful rendition of the material, with wider bandwidth and less time smear.

Impulse® Series

Impulse® 5c SKU-03616700 / 03616710 | Impulse® 8c SKU-03616720 / 03616730 | Impulse® 1012 SKU-03617480 / 03617490
 Impulse® 1015 SKU-03617500 / 03617510



Impulse® 5c

- Two-way sound reinforcement enclosure
- 5" or 8" Woofer
- 0.75" or 1" Silk Dome Tweeter
- 100v, 70v or 8 Ohm operation
- 50W (5c) or 70W (8c) Power handling
- Weather Resistant
- Durable Molded Polypropylene Enclosure
- Includes Steel Wall mounting Bracket
- Metal Grill



Impulse® 8c

- Two-way sound reinforcement enclosure
- 5" or 8" Woofer
- 0.75" or 1" Silk Dome Tweeter
- 100v, 70v or 8 Ohm operation
- 50W (5c) or 70W (8c) Power handling
- Weather Resistant
- Durable Molded Polypropylene Enclosure
- Includes Steel Wall mounting Bracket
- Metal Grill



Impulse® 1012

- 2-way full range sound reinforcement system
- Black Widow® 12" 1208-8 BWX WR SS SF long-throw woofer
- RX™22N Neodymium compression driver
- Power Handling: 2000 watts peak, 1000 watts Program
- HF Driver protected by Sound Guard™ III
- Patented Quadratic Throat Waveguide™ technology, 110 by 80 degree coverage
- Rugged plastic injection-molded trapezoidal enclosure
- Cabinet has dual rear corner angled sides for floor monitor use
- Full-coverage perforated steel grille, with powder coat finish
- Pole mount molded-in for 1 3/8" diameter poles
- M6 metric fly points for VM-70, top and left side of cabinet
- Weather-resistant for sheltered outdoor use
- Overall system weatherization rating of IP44



Impulse® 1015

- 2-way full range sound reinforcement system
- Black Widow® 15" 1508-8 BWX WR SS SF long-throw woofer
- RX™22N Neodymium compression driver
- Power Handling: 2000 watts peak, 1000 watts Program
- HF Driver protected by Sound Guard™ III
- Patented Quadratic Throat Waveguide™ technology, 110 by 80 degree coverage
- Rugged plastic injection-molded trapezoidal enclosure
- Cabinet has dual rear corner angled sides for floor monitor use
- Full-coverage perforated steel grille, with powder coat finish
- Pole mount molded-in for 1 3/8" diameter poles
- M6 metric fly points for VM-70, top and left side of cabinet
- Weather-resistant for sheltered outdoor use

SSE™ Series

SSE™ 6 SKU-00575370 / 00575380 | **SSE™ 10** SKU-00575280 / 00575290 | **SSE™ 12** SKU-00575310 / 00575320 | **SSE™ 12M** SKU-005754900 / 00575500 | **SSE™ 15** SKU-00575340 / 00575350 | **SSE™ 26** SKU-00575400 / 00575410

The SSE™ Series of loudspeakers enclosures has been re-engineered to deliver the clarity and directivity of spoken word programs.

Ideal for front of house, balcony, under-balcony and delayed speech reinforcement applications, SSE speakers will ensure the intended message is communicated without transient artifacts and articulation loss supporting typical throw distances of up to 60ft (20m).

The SSE Series of loudspeakers are purposely designed to be attractive yet discreet, available in black or white, and supporting multiple mounting and flying options. With the unique focused coverage pattern and aesthetic design plus range of sizes and power ratings, the SSE Series are perfect for classrooms, lecture theatres, auditoriums, courtrooms, houses of worship, banquet and meeting facilities or wherever spoken word intelligibility is absolutely essential.



	SSE™ 6	SSE™ 10	SSE™ 12	SSE™ 12M	SSE™ 15	SSE™ 26
Description	Two-way passive 6.5" loudspeaker system for permanent installations	Full-range, two-way passive loudspeaker system for permanent installations	Full-range, two-way passive loudspeaker system for permanent installations	Full-range, two-way low profile monitor enclosure	Full-range, two-way passive loudspeaker system for flown permanent installations	Two-way passive 2x 6.5" loudspeaker system for permanent installations
Program Power Handling	150W	400W	500 W	500 W	500 W	300 W
Peak Power Handling	300W	800W	1000 W	1000 W	1000 W	600 W
Low Freq Driver	6.5" woofer	10" woofer	12" woofer	12" woofer	15" woofer	2 x 6.5" woofers
High Freq Driver	14XT comp driver	14XT comp driver	14XT comp driver	14XT comp driver	14XT comp driver	14XT comp driver
Sensitivity (at 1w/1m)	90dB	95dB	98dB	98 dB	98dB	94 dB
Maximum SPL (at1m)	114.8dB	124dB	128dB	128dB	128dB	121.8dB
Frequency Response	100Hz-17kHz	80Hz-17kHz	79 Hz to 17 kHz	79 Hz to 17 kHz	74 Hz to 17 kHz	100 Hz to 17 kHz
Coverage Pattern	90° conical horn	90° H x 60° V	90°H x 40°V	90°H x 40°V	90°H x 40°V	90°H x 90°V
Impedance	8 Ohms	8 Ohms	8 Ohms	8 Ohms	8 Ohms	8 Ohms

Escort® Series

Escort® 6000 SKU-03608642 | **Escort® 5000** SKU-03608952 | **Escort® 3000** SKU-03608902

The Escort® series integrates the entire PA system into one complete, easy to use, easy to transport, highly reliable, incredible sounding package, making it the perfect choice for schools, houses of worship, DJs, hotel meeting rooms, banquet facilities and small music groups.

Three Escort models are available with all including up to 7 channels of microphone/line level inputs, built-in digital multi-effects processor, USB MP3 player, Peavey's Midmorph® technology, and exclusive FLS® (Feedback Locating System). Additionally the flagship Escort® 6000 version features Bluetooth® wireless audio playback.

The carrying case provides storage for everything needed for sound, including plenty of room for optional accessories such as microphones and cables. In addition to the included folding speaker stands, the case features heavy duty luggage-style wheels to roll the entire system away.



SPECIAL APPLICATION MICROPHONES

VCM™ 3 — OVERHEAD CHOIR MICROPHONE

VCM™ 3 SKU-00577970 / 00577960



This very small microphone is designed to be suspended over choirs, instrumental ensembles, or stage areas for sound reinforcement and recording applications.

- Miniature, cardioid pattern, choir microphone
- Back-electret condenser element
- 9-52 Volt phantom power
- Includes 10 meter slim profile microphone cable, windscreen, and wire-form hanging adapter
- Available in Black and White

PSM™ 3 — BOUNDARY MICROPHONE

PSM™ 3 SKU-00577980 / 00579040

Specifically designed for a low profile, surface-mounted configuration, the PSM™ 3 is ideally suited for stage performances as well as conferencing and other boundary applications. The PSM 3 contains a wide range of unidirectional condenser capsules mounted in its rugged housing, allowing it to become part of the acoustical boundary when placed on a flat, reflective surface.

- Back-electret condenser element
- Unidirectional (half-cardioid above boundary)
- Compact, low profile design
- Rugged construction
- Shock-absorbing mounting pad, quiet operation
- Black non-reflecting finish
- Detachable cable
- Operational from 9 to 52 VDC phantom power source
- Available in Black or White



PVR™ 2 — MEASUREMENT MICROPHONE

PVR™ 2 SKU-00592790

The PVR™ 2 is an omni-directional microphone for free-field measurement. With a highly reliable circuit and a 1/4" pre-polarized condenser capsule, it boasts high stability, low distortion and low noise in performance. The PVR-2 has an excellent flat frequency response making it an ideal candidate for sonic analysis systems or specialized recording.

- Type/pattern: Condenser/Omni-directional
- Frequency Response: 20~20000 Hz
- Sensitivity: -37 dBV/pa (14 mv/pa)
- Output Impedance: 200 Ohm
- Max SPL: 132 dB
- SNR Ratio: Over 70 dB
- Power Supply: 9-52v Phantom
- Connector: XLR 3 Pin
- Net Weight: 150 g (5.3 oz.)



DMG-5V™ — PUSH-TO-TALK DESKTOP

DMG-5V™ SKU-03017120

The DMG-5V™ is ideal for board meetings, conferences and more. The variable pattern control on the base allows you to change the microphone pickup pattern to meet your needs.

With its immunity to radio frequency interference, electronic devices in your meeting will not be a problem for the DMG-5V. The desk stand features a programmable membrane switch to control the talk and mute feature.

- Gooseneck microphone
- Status LED
- Integrated programmable stand
- 3-pin XLR male jack and terminal block
- 4-pin connector for hard-wiring cable with back or bottom exit
- Radio frequency immunity
- Power requirements: 48 VDC phantom power source



PM™ 18S — GOOSENECK PODIUM MICROPHONE

PM™ 18S SKU-00577990 / 00579060

Specifically designed for a low profile, surface-mounted configuration, the PSM™ 3 is ideally suited for stage performances as well as conferencing and other boundary applications. The PSM 3 contains a wide range of unidirectional condenser capsules mounted in its rugged housing, allowing it to become part of the acoustical boundary when placed on a flat, reflective surface.

- Back-electret condenser element
- Unidirectional (half-cardioid above boundary)
- Compact, low profile design
- Rugged construction
- Shock-absorbing mounting pad, quiet operation
- Black non-reflecting finish
- Detachable cable
- Operational from 9 to 52 VDC phantom power source
- Available in Black or White



DISTRIBUTORS IN EUROPE



Germany, Austria & Switzerland
 Mediamotion AG
 Schanzenstr. 36
 51063 Köln
 Germany
 +49 221 99884 0
 info@mediamotion-ag.de
 www.mediamotion-ag.de

Belarus
 Russtex
 PO Box 100
 St Austell, PL26 6YU
 United Kingdom
 +7 916 673 1314
 ioi@tm-net.ru

Italy & Malta
 Audio Link S.r.l
 Via Monte Prinzerà 17/a,
 Alberi di Vigatto
 43124 Parma
 Italy
 +39 0521 648723
 link@audiolink.it
 www.audiolink.it

Greece
 Stollas Music
 155, New National Road Athens
 26442 Patras
 Greece
 +30 2610 435400
 infosales@stollas.com
 www.stollas.com

Iceland
 Feris Ehf
 Dalvegur 16b,
 Kopavogur, 201
 Iceland
 +354-510 0500
 www.feris.is
 feris@feris.is

Benelux - MediaMatrix
 FACE bvba
 Hoek 76, Unit 301
 2850 Boom
 Belgium
 +32 3 844 67 97
 info@face.be
 www.face.be

France
 FACE bvba
 Hoek 76, Unit 301
 2850 Boom
 Belgium
 +32 3 844 67 97
 info@face.be
 www.face.be

Estonia
 Audiosky OÜ
 Laulupeo puistee 25
 Tartu, 51007
 Estonia
 +372 524 4005
 tiit.terask@gmail.com

United Kingdom & Ireland
 Barnes & Mullins Pro Audio
 Grays Inn House, Unit 14,
 Mile Oak Ind Est,
 Oswestry, Shropshire, SY10 8GA
 United Kingdom
 +44 (0) 1691 652449
 sales@bandm.co.uk
 www.bandmproaudio.co.uk

Benelux - Crest Audio
 Holland P.A. Service BV
 Kuiperbergweg 12
 Amsterdam Z-O, 1101 AG
 Netherlands
 +31 20 691 21 67
 info@hollandpa.nl
 www.hollandpa.nl

Greece
 Stollas Music
 155, New National Road Athens
 Patras
 26442
 Greece
 +30 2610 435400
 www.stollas.com
 infosales@stollas.com

France
 Tejix
 15 avenue de Saria
 77700 Serris - Marne La Vallée
 France
 +33 1 83 38 5555
 info@tejix.com
 www.tejix.com

Poland
 Lauda-Audio Adamowicz sp.j.
 Leśna 15A/1
 81-876 Sopot
 Poland
 +48 58 555 660
 info@lauda-audio.pl
 www.lauda-audio.pl

Norway
 Audiens Norge AS
 Industriveien 20
 2020 Skedsmokorset
 Norway
 +47 64 83 05 55
 post@audiens.no
 www.audiens.no

Spain
 Neotecnica
 C/ Marqués de Urquijo, 44
 28008 Madrid
 Spain
 +34 915 420900
 neotecnica@neotecnica.es
 www.neotecnica.es

Portugal
 Set2Stage LDA
 Rua Gomes de Amorim n° 1158
 (E.N.13)
 4490-091 Póvoa de Varzim
 Portugal
 +351 252 219 489
 geral@set2stage.pt
 www.set2stage.pt

Czech Republik & Slovakia
 Musicdata S.R.O
 U Tržiště 2246,
 594 01 Velké Meziříčí
 Czech Republic
 +420 566 521 371
 info@musicdata.cz
 www.musicdata.cz

Latvia
 SIA Rock Distribution
 Gales 27
 LV-2150 Sigulda
 Latvia
 +371 29994864
 info@rock-distribution.com
 www.rock-distribution.com

Slovenia
 KSL Studio d.o.o.
 Celovška cesta 172
 1000 Ljubljana
 Slovenia
 +386 1 510 44 54
 dragan@ksl-studio.si
 www.ksl-studio.si

Romania
 Stage Expert
 251 Olteniței, Sector 4
 041311 Bucharest
 Romania
 +40 21 3349924
 office@stage-expert.ro
 www.stage-expert.ro

Sweden
 Amplitude Audio
 Idévägen 10
 312 62 Mellbystrand
 Sweden
 +46 70 305 37 86
 info@amplitudeaudio.se
 www.amplitudeaudio.se

Ukraine
 Technology Group LLC
 Vasilia Stusa 2b/7, Office 201
 65000 Odessa
 Ukraine
 +380 67 1241244
 info@technologygroup.com.ua
 www.technologygroup.com.ua

Croatia - Crest Audio
 A&V Oprema
 Put Ante Starcevića 78
 20207 Mlini
 Croatia
 +385 98 344 593
 zdravko@avoprema.hr
 www.avoprema.hr

Lithuania
 Midiaudio UAB
 Gedimino g. 33
 Kaunas, 44311
 Lithuania
 +370 37 223 288
 sales@midiaudio.com
 www.midiaudio.com

www.peaveycommercialaudio.com

EUROPE

Peavey Commercial Audio
Rowan House
3, Medicott Close
Corby, Northants
NN18 9NF
pcasales.emea@peavey.com
+44 1536 424830

AMERICAS

Peavey Commercial Audio
5022 Hartley Peavey Drive
Meridian,
MS 39305
USA
mmtechsupport@peavey.com
(866) 662-8750

CHINA

Peavey International Limited
1st Floor, Taiping Yaoye, Gongye Wu Lu,
Shekou Shenzhen
518067
China
sales.apac@peaveycommercialaudio.com
+86 755 2686 8111



Commercial Audio

CATALOGUE 2020
Copyright Peavey Commercial Audio