


# Crest Audio® Versarray™ Mk III FlyQWIK™ Adjustable Rigging System



## Crest Audio® Versarray™ VR218 Mk III Ground Stack Kit

### Specifications and Instructions

 **CAUTION!** Before attempting to stack any Versarray™ 112 Mk III / Pro cabinets onto a Versarray™ 218 Mk III / Pro Sub, refer to a qualified professional. The Versarray™ 218 Mk III / Pro Sub and/or speaker array can fall over from improper suspension, resulting in serious injury and property damage. Use only the correct mating hardware. All associated rigging is the responsibility of others.

#### Description

The Crest Audio® Versarray™ VR218 Mk III Ground Stack Kit is designed to allow up to three of the Versarray™ 112 Mk III / Pro cabinets to be stacked above a Versarray™ 218 Mk III / Pro Sub for ground stack use. Brackets that bolt to the top of the Versarray™ 218 Mk III / Pro Sub, to interface with the cabinet rigging hardware are provided, as well as Strapping Plates to provide for strapping the Sub cabinet down and securing it to the stage or the ground are supplied.

This Kit is an optional piece of the overall rigging system, and it will not be needed if there is no need to stack VR™ 112 Mk III / Pro cabinets on top of the VR™ 218 Mk III / Pro Sub.

#### Specifications:

Contents: Two Strap Stacking Brackets (L & R), one Rear Pivot Bar Bracket, two Strapping Plates (L & R). All required bolts are supplied on the VR™ 218 Sub, and the locking push pins needed are included on the VR™ 112 Mk III / Pro cabinets.

Height added to Versarray™ 218 Mk III / Pro Sub: 4.93" (12.52 cm)


Material: 5 mm (approx. 7 Gauge) thick solid steel alloy.

Finish: All brackets and plates have a flat black powder coated paint finish.

Maximum Combined Total Stack Angle: Must be less than 30 degrees.

Maximum Number of Cabinets per Sub: No more than 3 maximum

 Versarray™ 112 Mk III / Pro two-way speaker cabinets can only be stacked on top of a Versarray™ 218 Mk III / Pro Sub when the Sub is located on a substantially level surface, and secured to the stage or ground with safety straps.

 **CAUTION!** The Crest Audio® Versarray™ Mk III Ground Stack Kit is designed to be used ONLY in conjunction with the Versarray™ 218 Mk III / Pro Sub and the Versarray™ 112 Mk III / Pro two-way speaker cabinets! It is not designed to be used with any other brands of Subs or stacking cabinets!



#### CAUTIONS:

IF ANY OF THE BRACKETS, RAILS, CABINET STRAPS, PIVOT BAR OR GROUND STACK BRACKETS HAS BEEN DAMAGED OR DISTORTED, DO NOT USE, AND DO NOT STACK THE ARRAY UNTIL THEY CAN BE REPLACED OR REPAIRED!



DO NOT USE THE PIVOT BAR OR ANGLE SLIDER BRACKET AS HANDLES TO TRANSPORT THE CABINETS!

DO NOT TRANSPORT THE CABINETS IN ARRAY CONFIGURATION COUPLED TOGETHER, OR WHILE STACKED ON TOP OF THE SUB.

TRANSPORT WITH THE RECOMMENDED TRANSPORT CART AND IN THE STIPULATED MANNER FOR THAT CART IS THE ONLY APPROVED METHOD FOR TRANSPORTING THE CABINETS IN THE ARRAY CONFIGURATION. TRANSPORT IN AN UNAPPROVED MANNER VOIDS THE WARRANTY, AND THE SYSTEM WOULD BE CONSIDERED UNSAFE TO BE FLOWN AFTER SUCH AN UNAPPROVED TRANSPORT EVENT.

Correct use and seating of the Quick Release Push Lock Pins Used with most all Versarray™ rigging hardware. When using the Quick Release Positive Lock Pins, when the Quick Release Push Lock Pins are inserted, they should be fully seated, so that the black shoulder near the end of the pin has been placed flush with the side of the bracket, or as far in as the pin hole cavity will allow it to be inserted.

You will have to fully depress the center push-button to do this.

You should not be able to pull these pins out unless the center push-button is fully depressed.

The Crest Audio® Versarray™ loudspeaker models should be stacked on top of the Sub only in accordance with the procedures and limitations specified in the User's Manual and possible manual update notices. Do not attempt to suspend/stack unless you have read and properly understood all instructions. This system should be connected with certified rigging hardware by an authorized rigging professional and in compliance with local, provincial or national suspension ordinances. ALWAYS USE PROPER GRADE HARDWARE.

Design and specifications subject to change without notice.

# Crest Audio® Versarray™ VR Ground Stack Kit Installation Procedure



Installation of each individual bracket and/or plate is started by the removal of the bolts on the top and sides of the cabinet that correspond with the particular bracket being installed. There are 8 bolts on the top of the cabinet and 2 on each side to be removed. A 6.0 mm Allen wrench (Hex Key) is required to remove the bolts. See Fig. 1 – 4

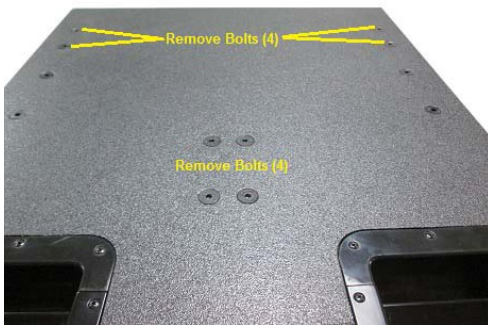


Figure 1



Figure 2



Figure 3



Figure 4

## Left Strap Stacking Bracket

1. After the two bolts have been removed, place the bracket into position. Orient it so that the ear is on the edge of the cabinet. See Fig.5



Figure 5

2. Place the bolts through the mounting holes in the bracket into the holes in the cabinet.  
See Fig. 6

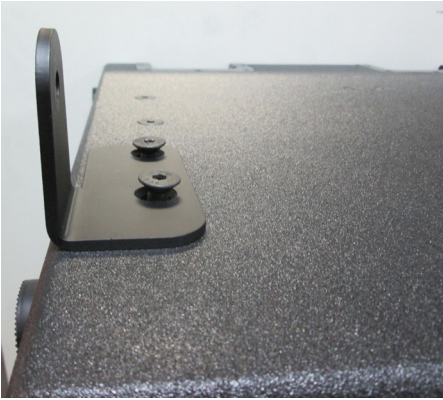


Figure 6

3. Slowly tighten down the bolts, while moving the wrench from bolt to bolt. This allows the bolts to tighten the bracket down evenly. This also allows the head of the bolts to grab in the mounting holes and allow for self centering. You might have to slightly maneuver the bracket to assist with this.

**Note:** If the bracket does not square up and align properly, the cabinet being placed on the brackets will not line up correctly, making it hard to pin the cabinet in place.

## **Right Strap Stacking Bracket**

Repeat the steps for installing the Left Strap Stacking Bracket. The Right Strap Stacking Bracket is installed in the same fashion as the left. See Fig. 7 & 8



Figure 7



Figure 8

## Rear Pivot Bar Bracket

1. After the four bolts have been removed, place the bracket into position. Orient it so that the angle part of the bracket is pointing toward the rear of the cabinet. See Fig. 9



Figure 9

2. Place the bolts through the mounting holes in the bracket into the holes in the cabinet. See Fig 10

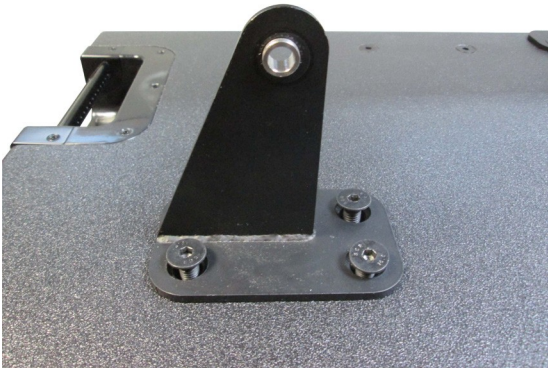


Figure 10

3. Slowly tighten down the bolts, while moving the wrench from bolt to bolt. This allows the bolts to tighten the bracket down evenly. This, also, allows the head of the bolts to grab in the mounting holes and allow for self centering. You might have to slightly maneuver the bracket to assist with this.

**Note:** If this bracket does not square up and align properly, the Angle Slider Bracket on the back of the cabinet being set in place will not line up correctly. This will make it hard to pin the cabinet to the bracket.



## Right and Left Strapping Plates

Use the following steps to install both the right and left Strapping Plates.

1. After the two bolts have been removed, place the bracket into position. Orient it so that the ear is on the edge of the cabinet. See Fig. 11



Figure 11

2. Place the bolts through the mounting holes in the plate into the holes in the cabinet. See Fig. 12



Figure 12

3. Slowly tighten down the bolts, while moving the wrench from bolt to bolt. This allows the bolts to tighten the bracket down evenly. This also allows the head of the bolts to center in the mounting holes and allow for self centering. You might have to slightly maneuver the bracket to assist with this.

**Note:** The Strapping Plates will be needed when using safety straps to secure the VR218 MKIII/Pro Sub to the floor or stage. The Safety Straps will stabilize the cabinet while having the extra weight of the VR112 MKIII/Pros mounted on top.

Maximum Strap width: 3 inches  
Minimum Strap width: 2 inches



**Warning:** Use a Safety Strap to secure the the VR218 MKIII/Pro Sub when installing more than one VR112 MKIII/Pro to the ground stack kit on top of the cabinet.

## VR112 MKIII / PRO Cabinets to Ground Stack Brackets Installation Procedure

1. Before attempting to install the VR112 cabinet onto the ground stack brackets, remove the bottom front quick release lock pin. Do this on both sides. See Fig. 13 and 13a.



Figure 13

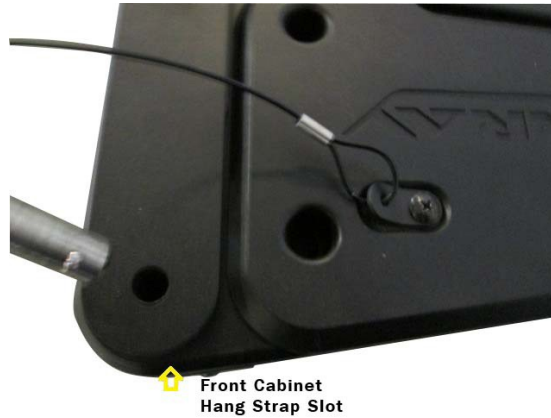


Figure 13a

2. Remove the Pivot Bar hole pin from the Angle Slider Bracket. Swing the Pivot Bar up and out of the way. See Fig. 14 and 14a

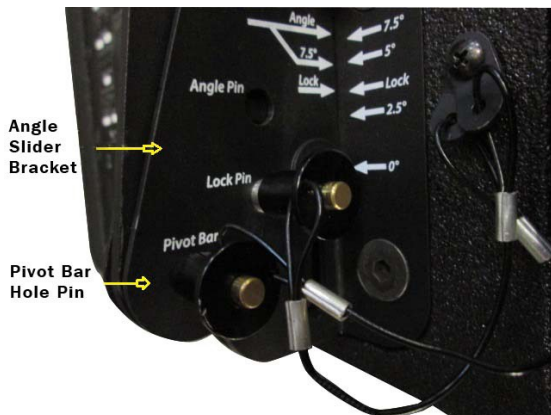


Figure 14



Figure 14a

3. Predetermine what angle the first VR112 cabinet will be used in, 0 or 2.5 degrees. Remove the pin from the Lock Pin hole on the Angle Slider Bracket. Adjust the Angle Slider Bracket until the angle arrow lines up with the desired angle point as shown by the arrow labeled Angle on the Angle Slider Rail. The Ground Stack Kit will only allow for the first cabinet to be adjusted to the angles of 0 degrees and 2.5 degrees.

Insert the pin into the Angle Pin hole. This sets the angle of the cabinet to desired angle. See Fig. 15.

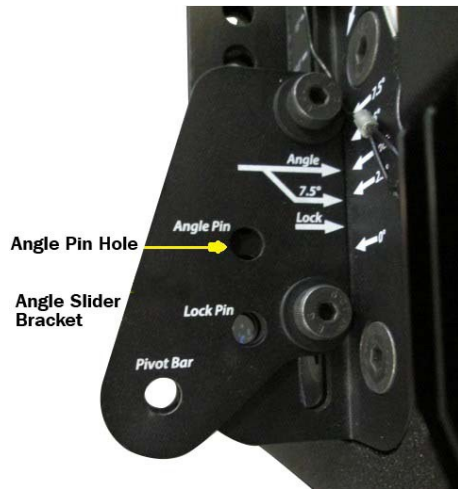


Figure 15

4. With help from a second person, lift the VR112 MKIII Cabinet and place it on top of the sub, engaging the Ground Stack Brackets on the top of the cabinet. See fig 16 and 16a



Figure 16



Figure 16a

5. Maneuver the cabinet by hand to allow the holes on the Strap Stacking brackets and the cabinet bottom strap slots to line up. This can be achieved easily by carefully setting the cabinet down initially lining up the Strap Slots on the cabinet with the Strap Stacking Brackets. Also, lining up the Rear Pivot Bar Bracket with the Angle Slider Bracket on the cabinet. Raise the cabinet up so the front is parallel with the surface of the sub and pin first one side than the other. See Fig 17





Figure 17

6. Using the handle mounted on the back of the cabinet, adjust the back of the cabinet up or down to align the Pivot Bar hole on the Angle Slider Bracket to the pin hole on the Rear Pivot Bar Bracket mounted on the sub. Once the holes on the two brackets align, insert the Lock Pin. See Fig. 18 and 18a



Figure 18

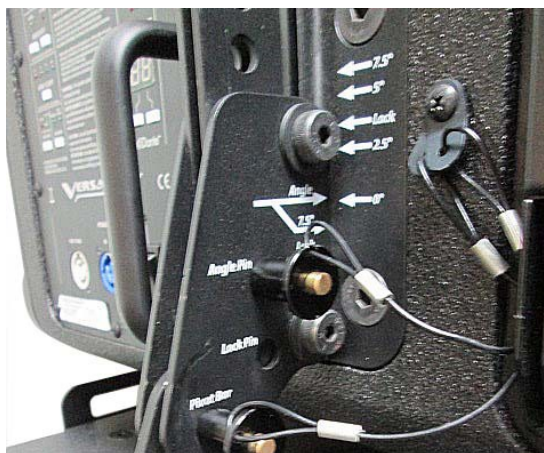


Figure 18a

7. The first cabinet is now in place and is now ready to receive the second and third cabinets. See Fig. 19. No more than a total of 3 cabinet are to be stacked on to the sub using the Ground Stack Kit. More than 3 will make the sub unstable even with the sub strapped down with a safety strap to the floor or stage.

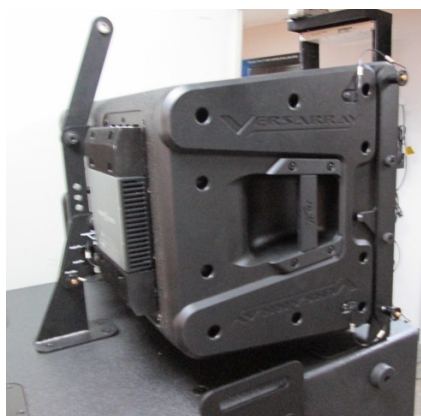


Figure 19

## Installation Procedure for additional VR112 MKIII/Pro Cabinets

1. Start by preparing the first cabinet to receive the second cabinet. This is done by removing the top front quick release lock pins. Slide the front hang straps up and pin them in place using the pins that were just removed. See fig. 21. Swing the pivot bar upwards so that it would be able to mate up with the second cabinet. See Fig. 22

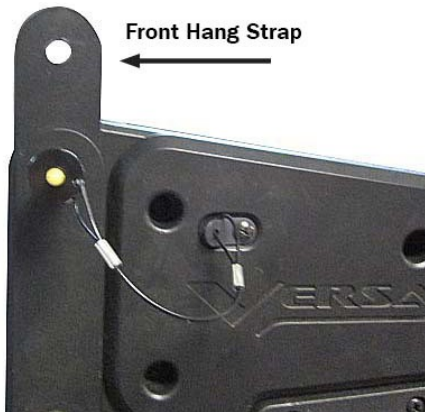


Figure 21



Figure 22

2. Now prepare the second cabinet to mate with the first. Remove the bottom front quick release lock pin on the second cabinet. Do this on both sides. See Fig. 23 and 23a.



Figure 23

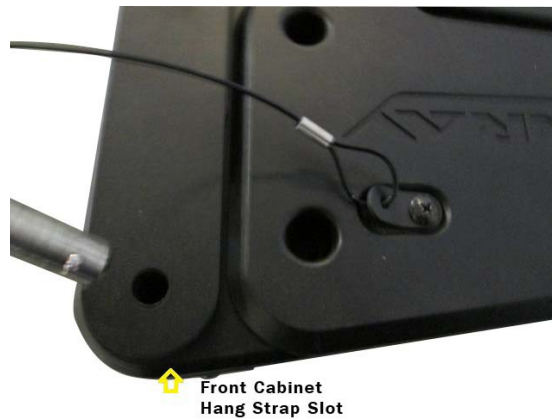


Figure 23a

3. Remove the Pivot Bar hole pin from the Angle Slider Bracket on the second cabinet. Swing the Pivot Bar up and out of the way. See Fig. 24 and 24a

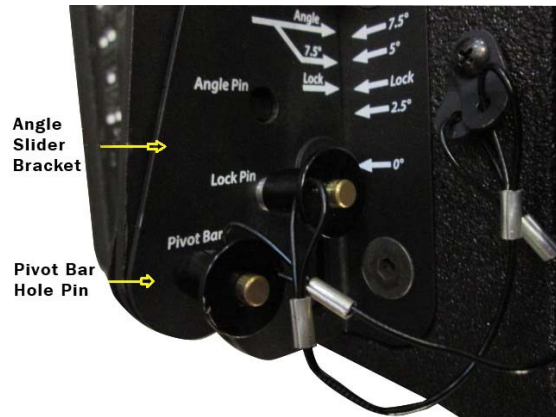


Figure 24



Figure 24a

4. Predetermine what angle the second VR112 will be used in, 0 thru 15 degrees. Remove the pin from the Lock Pin hole on the Angle Slider Bracket. Adjust the Angle Slider Bracket until the angle arrow lines up with the desired angle point as shown by the arrow labeled Angle on the Angle Slider Rail. For details on setting the 7.5 degree angle refer to the VR112 owners manual for instructions. Insert the pin into the Angle Pin hole. This sets the angle of the cabinet to desired angle. See Fig. 25 and 25a

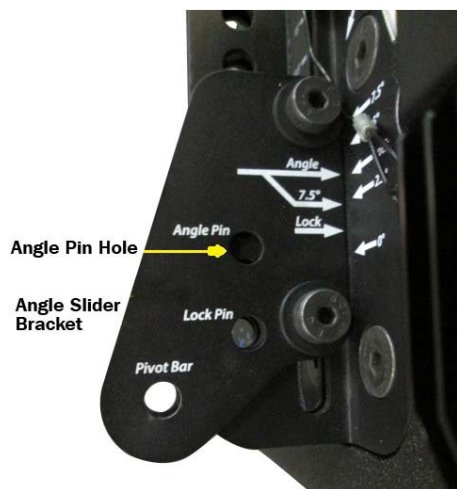


Figure 25



Figure 25a

5. With help from a second person, lift the VR112 MKIII Cabinet and place it on top of the first VR112 cabinet, engaging the front hang straps of the first cabinet with the strap slots of the second cabinet. See fig. 26

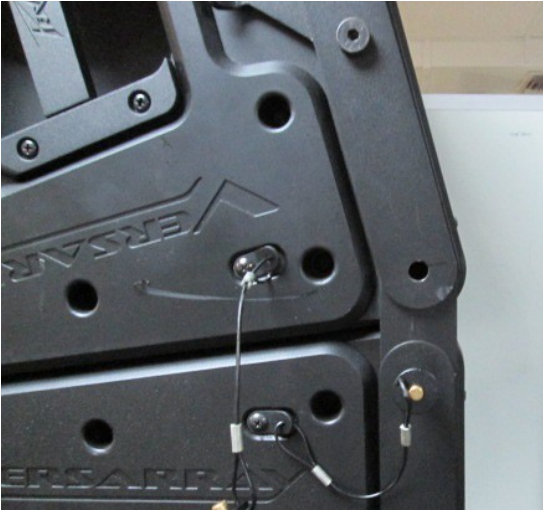


Figure 26

6. Maneuver the cabinet by hand allowing the Locking Pin to be inserted easily into the holes mating the front hang straps with the strap slots. See fig. 27



Figure 27



7. Using the handle mounted on the back of the cabinet, adjust the back of the cabinet up or down to align the Pivot Bar hole on the Angle Slider Bracket of the second cabinet to the pin hole on the Pivot Bar of the first cabinet. Once the holes align, insert the Lock Pin. See Fig. 28 and 28a

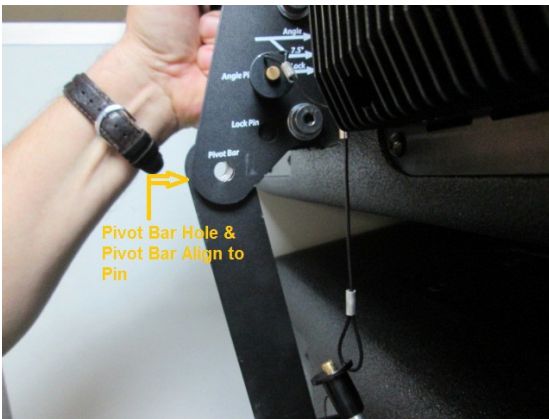


Figure 28

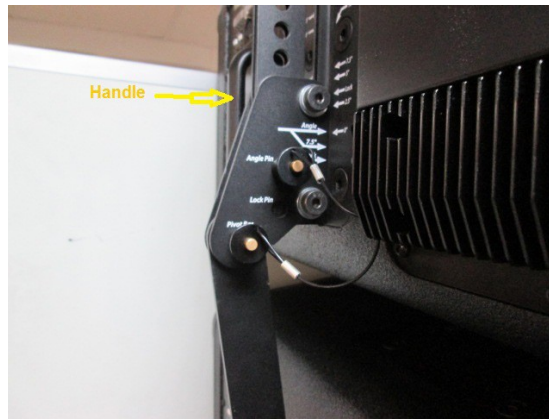


Figure 28a

8. This concludes the installation of the second VR112 enclosure to the Ground Stack Kit. Repeat these steps to install a third enclosure if needed.

Do Not install more than three VR112 enclosures onto the Ground Stack Kit.

Do Not exceed a total of 30 degrees of cabinet angle between all three cabinets.

Do not attempt to suspend/stack unless you have read and properly understood all instructions.

Review all Safety Warnings and Cautions in the Owner's Manual before stacking cabinet installation.









[www.peaveycommercialaudio.com](http://www.peaveycommercialaudio.com)

Warranty registration and information for U.S. customers available online at  
[www.peaveycommercialaudio.com/warranty](http://www.peaveycommercialaudio.com/warranty)  
or use the QR tag below



Features and specifications subject to change without notice.

Crest Audio 5022 HWY 493 N. Meridian, MS 39305 (601) 483-5365 FAX (601) 486-1278



Logo referenced in Directive 2002/96/EC Annex IV  
(OJ L37/38, 13.02.03 and defined in EN 50419: 2005  
The bar is the symbol for marking of new waste and  
is applied only to equipment manufactured after  
13 August 2005