

ELEMENTS™

Waterproof Enclosures

*With an IP
rating of 56,
The Great
Outdoors
Never
Sounded
Better!*





ELEMENTS™ C Series OVERALL

The American-made, incredibly durable, reliable and versatile Elements™ weatherproof enclosures are a combination of innovative cabinet construction and proven, weatherized components designed for direct contact with the elements in the most demanding climates. Gone are the days of hanging so-called enclosures outside only to replace the speaker in a year or two.

The Elements™ C series of composite enclosures are constructed from an advanced composite material that is dimensionally stable in wet

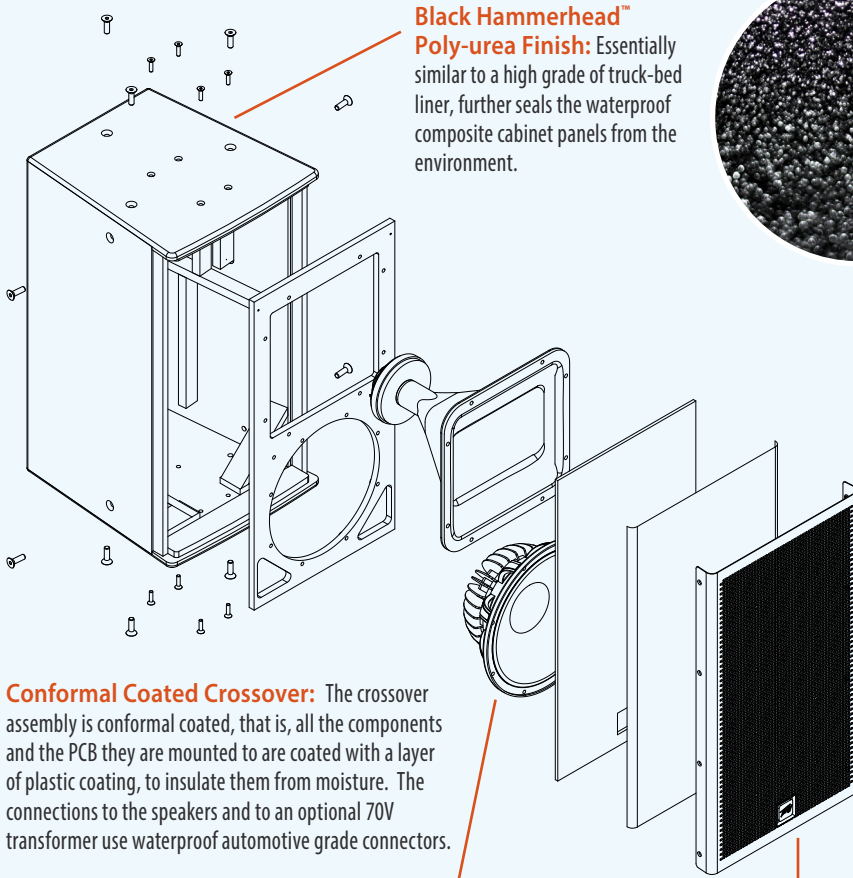
conditions and resists contamination, yet has the resonant properties of wood. This light and durable material ensures unmatched sonic performance while providing reliable service year after year. The stainless steel grills of the Elements C series enclosures feature a barrier membrane that repels water yet allows moisture to escape without affecting the sonic performance of the loudspeaker.

The IP56 rated Elements C series speakers are available in three two-way, full range configurations and as a flyable subwoofer. The Elements



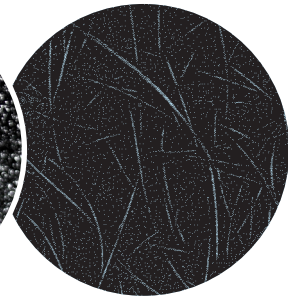
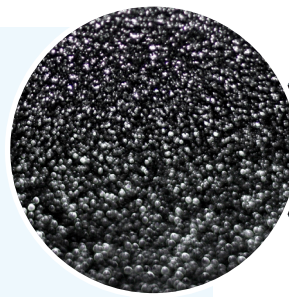
ALL PEAVEY PERFORMANCE & RELIABILITY.

ALL WEATHER DESIGN TO RESIST THE ELEMENTS.

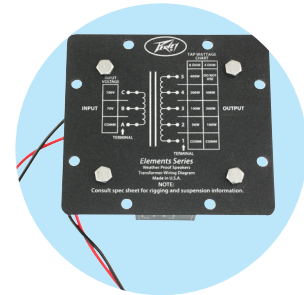


Black Hammerhead™ Poly-urea Finish: Essentially similar to a high grade of truck-bed liner, further seals the waterproof composite cabinet panels from the environment.

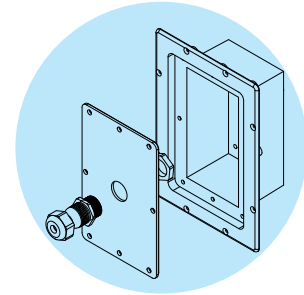
Conformal Coated Crossover: The crossover assembly is conformal coated, that is, all the components and the PCB they are mounted to are coated with a layer of plastic coating, to insulate them from moisture. The connections to the speakers and to an optional 70V transformer use waterproof automotive grade connectors.



Composite Fiber Panels: Advanced technology composite fiber panels consist of a fiberglass-resin sheet skin on both sides, with a foamed resin core. Absolutely will not rot or degrade with time or exposure to weather.

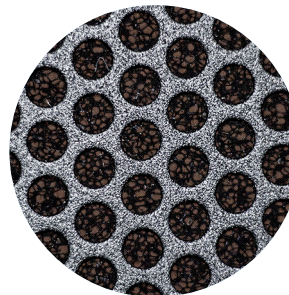


70V Transformer Option Bay: included with waterproof connectors to easily yet safely wire a transformer into the crossover path.



Weather-Sealed Input Cup Cover With Gland Nut For Speaker Cable Entry: Gland nut entry into the water-sealed input cup plate assures no water will leak where the speaker cable comes in.

Water-Resistant Black Widow® Woofer: 1,000 watt program rating woofer with cone and dust cap are absolutely water repellent, and can withstand direct contact with water for long periods of time.

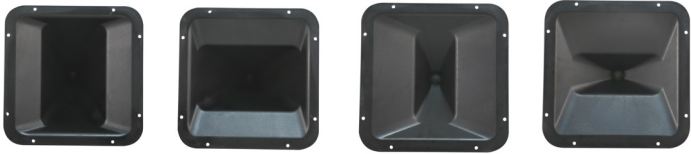


Triple-layer Performance: Stainless Steel moisture-repellent grille, with reticulated foam, and a third layer of hydro-phobic (water-repellant) cloth.

SYSTEM WEATHERIZATION RATING OF: IP56

115C and Elements 112C feature 15" and 12" weatherproof Black Widow® woofers and an RX™ 22 2" titanium diaphragm compression driver tweeter coupled to a Quadratic-Throat Waveguide® rotatable horn.

The Elements 212C SUB is a flyable subwoofer enclosure featuring a pair of 12" weatherproof woofers.



Rotatable Horns: The Elements 115C and Elements 112C can each be ordered with either a 60° X 40° or a 105° X 60° rotatable horn. The Elements 108C combines a 75° X 75° horn with an 8" weatherproof woofer in a compact and durable enclosure.



The Elements™ Pole Mounting System: A simple and straightforward pole mounting solution for the Peavey® Elements Series speaker. With its customizable angle adjustment, the Elements Pole Mounting System can support installations in a wide range of locations.



108C

112C

115C

212C SUB



Lamar School, Meridian MS: Four Elements™ 115C speakers attached to two light-poles in line with one another, two cabinets directed to the home side and two toward the guest bleachers cover the entire ball field.

Elements™ C Series Enclosures

Specifications

	Elements™ 108C	Elements™ 112C	Elements™ 115C	Elements™ 212C Sub
Frequency Response, 1 meter on-axis, swept-sine in anechoic environment:	64 Hz - 18 kHz (+/-3dB)	68 Hz - 18 kHz (+/-3dB)	56 Hz - 18 kHz (+/-3dB)	63 Hz - 1.5 kHz (+/-3dB)
Usable Low Frequency limit (-10 dB point):	52 Hz	44 Hz	44 Hz	NA
Power Handling:	200 watts continuous 400 watts program 800 watts peak	500 watts continuous 1,000 watts program 2,000 watts peak	500 watts continuous 1,000 watts program 2,000 watts peak	1,000 watts continuous 2,000 watts program 4,000 watts peak
Sound Pressure Level, 1 watt, 1 meter in anechoic environment:	91 dB SPL, (2.83 V input)	95 dB SPL, (2.83 V input)	96 dB SPL, (2.83 V input)	98 dB SPL, (2.00 V input)
Maximum Sound Pressure Level (1 meter):	114 dB SPL continuous 120 dB SPL peak	122 dB SPL continuous 128 dB SPL peak	123 dB SPL continuous 129 dB SPL peak	128 dB SPL continuous 134 dB SPL peak
Nominal Radiation Angle:	75 degrees horizontal by 75 degrees vertical	Elements 112: 60x40: 60 degrees horizontal by 40 degrees vertical Elements 112: 105x60: 105 degrees horizontal by 60 degrees vertical Horns are rotatable, coverage pattern can be swapped horizontal for vertical	Elements 115: 60x40: 60 degrees horizontal by 40 degrees vertical Elements 115: 105x60: 105 degrees horizontal by 60 degrees vertical Horns are rotatable, coverage pattern can be swapped horizontal for vertical	NA NA NA
Transducer Complement:				
Low Frequency Section:	1x8 in. woofer, vented; Heavy-duty aluminum cone with synthetic rubber surround	1x12 in. woofer, vented; 1208-8 SPS WR Water-Resistant Black Widow® Woofer	1x15 in. woofer, vented; 1508-8 SPS WP Water-Resistant Black Widow® Woofer	2x12 in. woofer, vented; 1208-8 SPS WR Water-Resistant Black Widow® Woofer
High Frequency Section:	1 x 0.875 in. Exit/50.8mm Voice Coil Compression Driver on Quadratic Throat™ Waveguide RX22™ on a 75 deg. x 75 deg. Quadratic Throat™ Waveguide	1 x 0.875 in. Exit/50.8mm Voice Coil Compression Driver on Quadratic Throat™ Waveguide, RX22 RX22™ on a 60 deg. x 40 deg. waveguide for the Elements™ 112C 60X40, and a 105 deg. X 60 deg. waveguide for the Elements™ 112C 105X60	1 x 0.875 in. Exit/50.8mm Voice Coil Compression Driver on Quadratic Throat™ Waveguide, RX22 RX22™ on a 60 deg. x 40 deg. waveguide for the Elements™ 115C 60X40, and a 105 deg. X 60 deg. waveguide for the Elements™ 115C 105X60	NA NA
Boxing Tuning Frequency:	60 Hz	50 Hz	45 Hz	59 Hz
Electroacoustic Crossover Point:	2.0 kHz at 12 dB/octave	Elements™ 112C 60X40: Low Frequency - High Frequency: 1.8 kHz at 24dB/octave Elements™ 112C 105X60: Low Frequency - High Frequency: 1.9 kHz at 24dB/octave	Elements™ 115C 60X40: Low Frequency - High Frequency: 1.7 kHz at 24dB/octave Elements™ 115C 105X60: Low Frequency - High Frequency: 1.8 kHz at 24dB/octave	NA NA
Impedance (Z):	Nominal: 8.0 ohms Minimum: 6.3 ohms	Nominal: 8.0 ohms Minimum: 5.8 ohms	Nominal: 8.0 ohms Minimum: 5.8 ohms	NA NA
Recommended High pass (Infrasonic) Filter:	45 Hz, LR 24 dB/oct. type	45 Hz, LR 24 dB/oct. type	42 Hz, LR 24 dB/oct. type	45 Hz, LR 24 dB/oct. type
NOTE: to safely achieve maximum rated SPL output, audio signal must be filtered for extreme low frequency content. All high SPL vented cabinets should have this signal protection.				
Input Connections:	2 x Neutrik® Speakon® NL4MD & 1 x 4-position barrier strip			
Enclosure Materials & Finish:	1/2" thick advanced technology composite fiber panels, finished in black Hammerhead™ polyurea with lightly textured finish			
Mounting Provisions:	(12) 3/8" -16 Threaded Mounting Suspension Points (2 each top & 3 each bottom and 2 each sides & Points (3 each top & bottom and 2 each sides & one bottom rear). Rubber washers are provided one bottom rear). Rubber washers are provided for use with 3/8" eyebolts, to assure a weather for use with 3/8" eyebolts, to assure a weather tight seal. Three sets of 4) 1/4 X20 SS inserts, the sets are located on the top, rear and bottom for use with the Peavey® Versamount™ 35 and the Peavey Elements™ Pole Mount bracket			
Dimensions (H x W x D):	Front: 17.32 in x 13.94 in x 10.94 in. 440mm x 354mm x 278mm Rear: 17.32 in x 8.75 in x 10.94 in 440mm x 222mm x 278mm	Front: 27.38 in x 15.00 in x 16.38 in. 695mm x 381mm x 416mm Rear: 27.38 in x 12.38 in x 16.38 in. 695mm x 381mm x 416mm	Front: 30.69 in x 18.00 in x 17.50 in. 780mm x 457mm x 445mm Rear: 30.69 in x 15.13 in x 17.50 in. 780mm x 384mm x 445mm	29.44 in x 14.07 in x 16.35 in. 748mm x 357mm x 415mm



Features and specifications are subject to change without notice.